

The future is



Alex W. Friedrich
Universitätsklinikum Münster

TechMed Event
2-11-2022

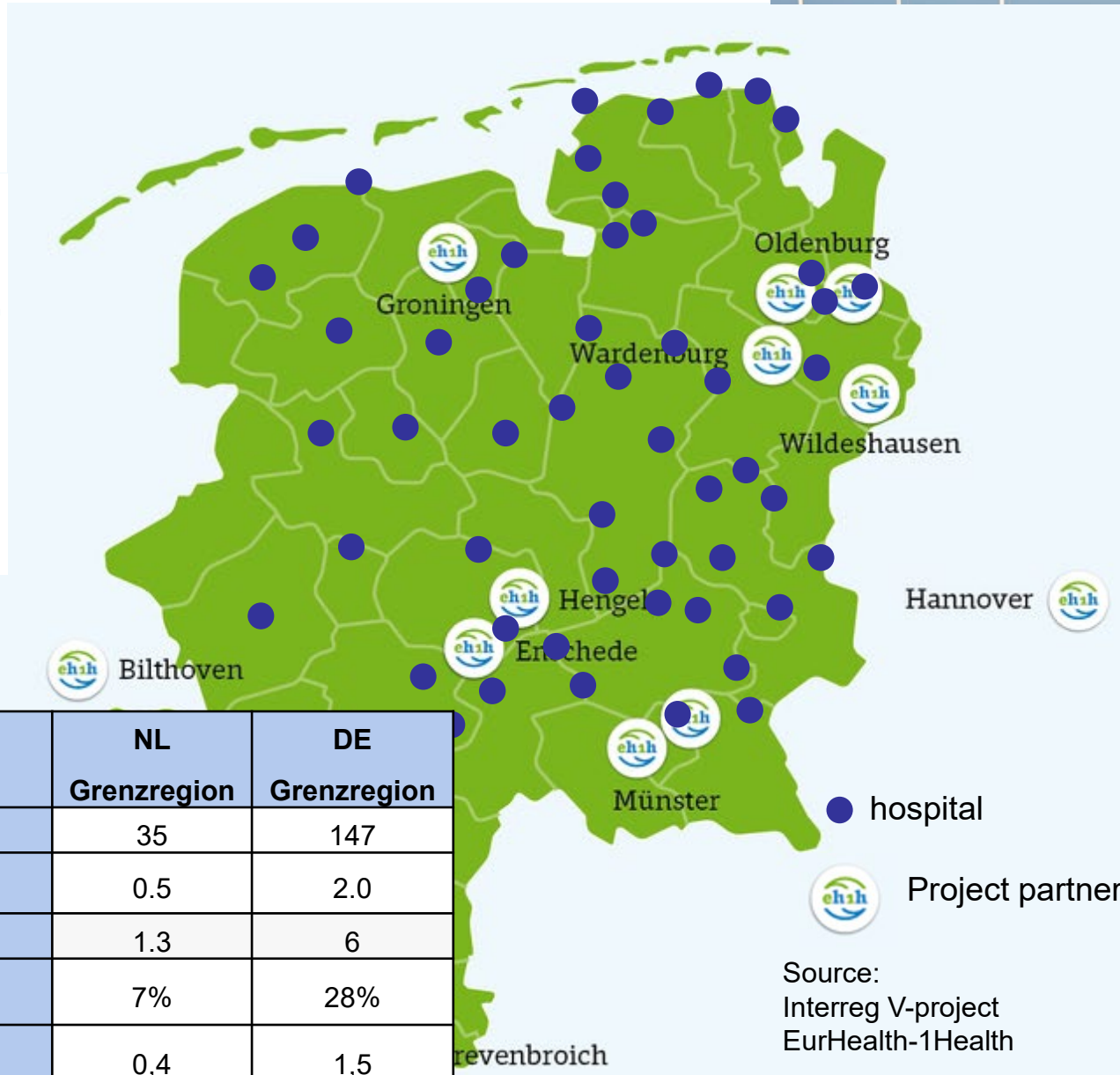
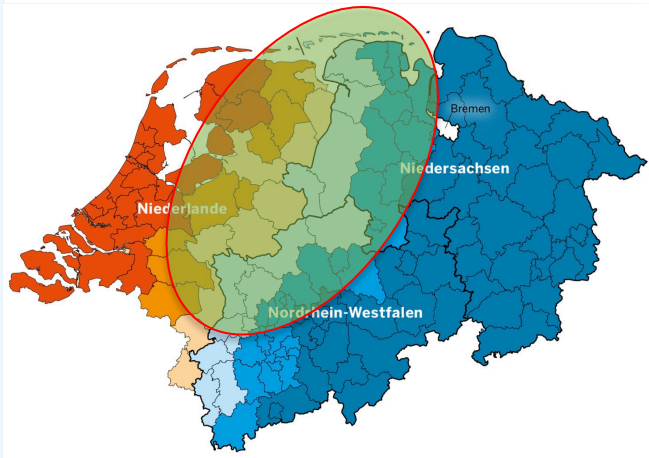


Welcome to the heart of our European Region



NL: 17 Mio
 Nds: 7,9 Mio
 Bremen: 0,6 Mio
 NRW: 17,6 Mio

Total: 43 Mio



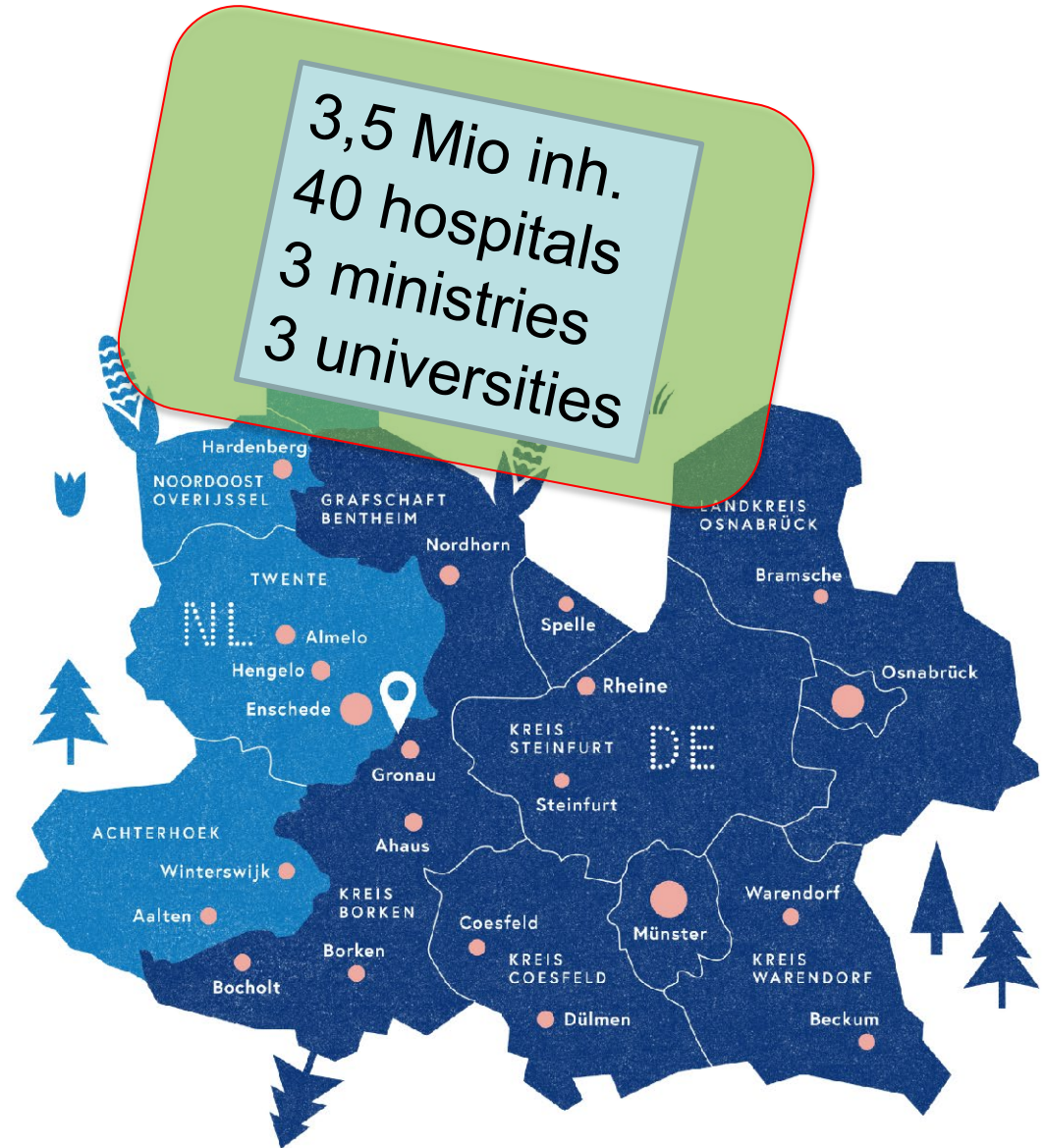
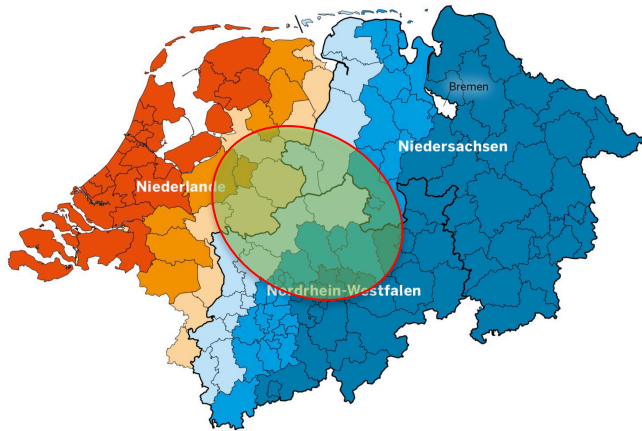
Parameter	NL Grenzregion	DE Grenzregion
hospitals (ZKH)	35	147
Hospitals / 100.000 inh.	0.5	2.0
Beds/1.000 inh.	1.3	6
Stat. pat. /100 inh.	7%	28%
Doctors in practice /1000 inh	0.4	1.5

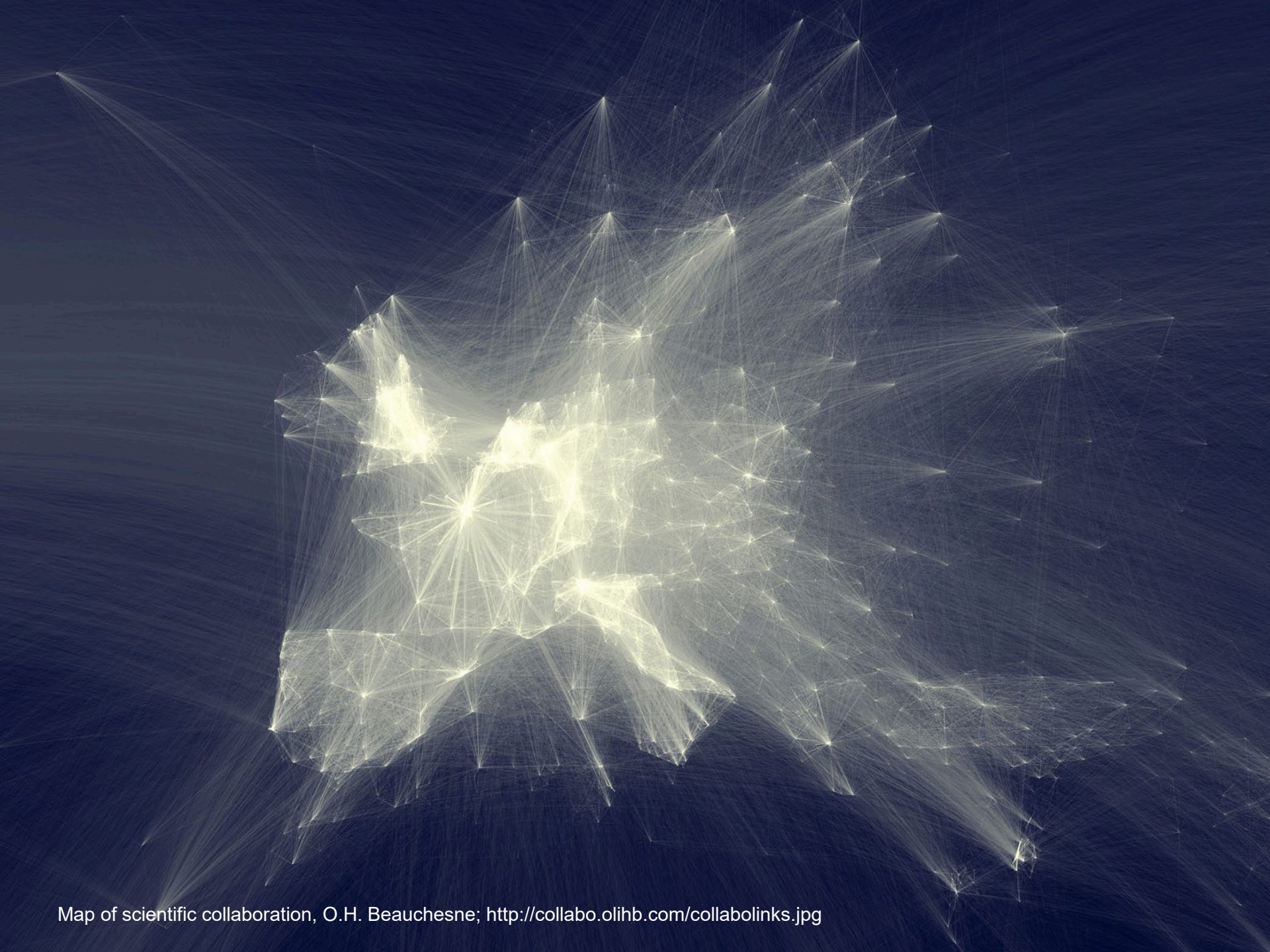
Source:
 Interreg V-project
 EurHealth-1Health

Welcome to the heart of our European Region



NL:	17 Mio
Nds:	7,9 Mio
Bremen:	0,6 Mio
NRW:	17,6 Mio
Total:	43 Mio





Map of scientific collaboration, O.H. Beauchesne; <http://collabo.olihb.com/collablinks.jpg>

Easing legal and administrative obstacles in EU border regions

Final Report

Service Request Nr 2015CE160AT013

Competitive Multiple Framework Service Contracts for the provision of Studies related to the future development of Cohesion Policy and the ESI Funds (Lot 3)

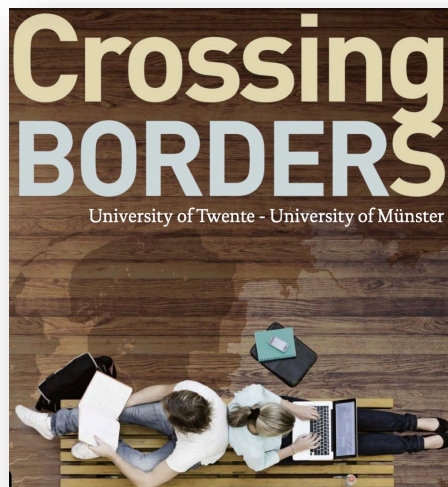
Contract holder:

Metis GmbH, Panteia BV, AEIDL – Association Européenne pour l'Information sur le Développement Local, CASE – Center for Social and Economic Research

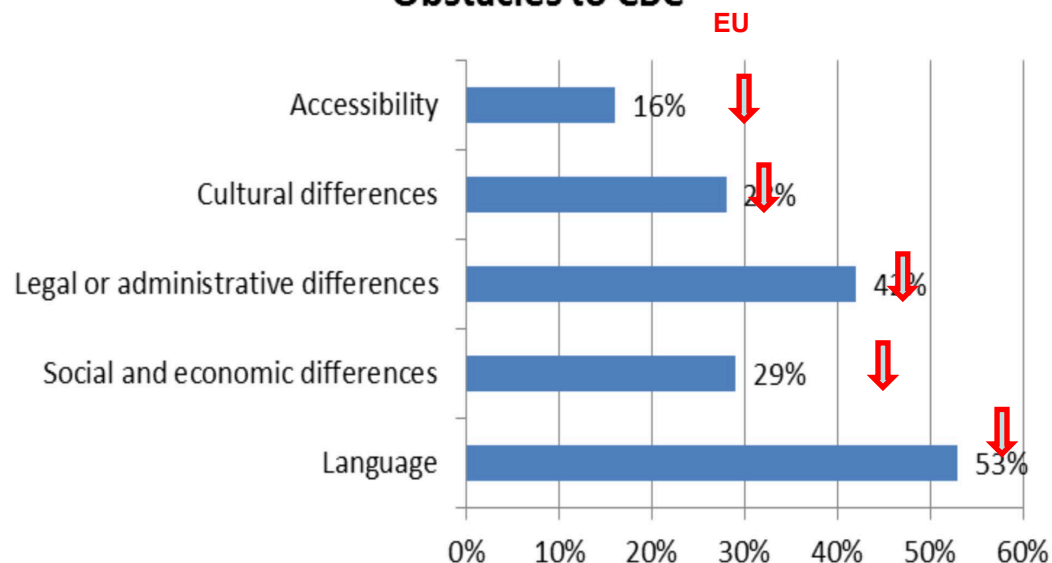
Report authors: J. Pucher, T. Stumm, P. Schneidewind

March 2017

Directorate-General for Regional and Urban Policy



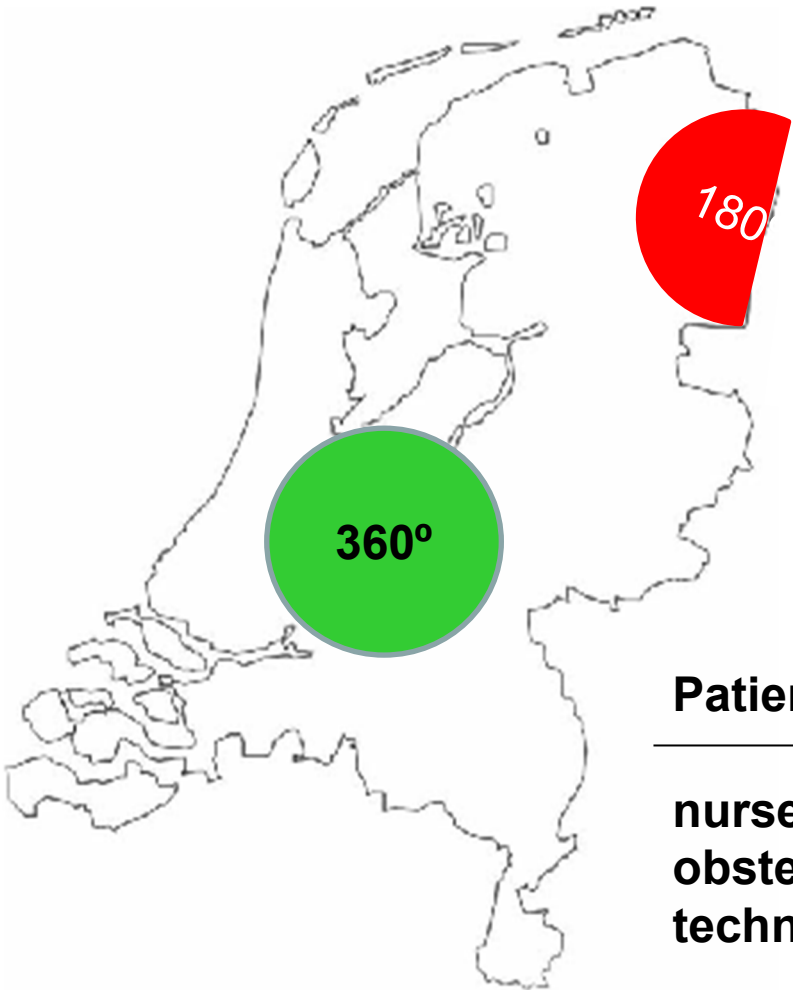
Obstacles to CBC



Survey on Crossborder Collaboration (CBC), DG Regio 2016

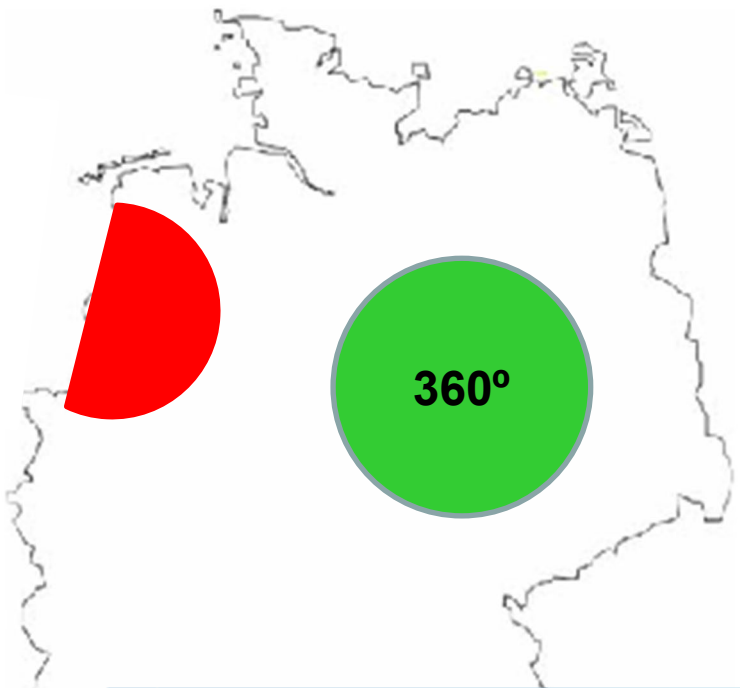
Germany-Netherlands

The border still exists for care&cure, many diploma's, training



Patients

**nurses
obstetrics
technicians**



 **Europe for patients**
A European Commission campaign bringing together different policy initiatives that share a common goal, **better health care for all in Europe.**

- About this site
- Policy and Actions
- All News
- All Events
- Contact

Cross-border Healthcare
Rules for receiving cross-border healthcare and reimbursement of these costs are now not always clear or easy to understand. That is why the Commission proposed an EU Directive on the application of patients' rights in cross-border healthcare, which was formally adopted by the European Parliament and the Council in 2011. It provides more clarity about possibilities to seek healthcare in another Member State.
The Directive also clarifies who is responsible for quality and safety of care in cross-border settings. Finally, it strengthens cooperation in different areas, such as networks of centres of reference for specialised care.
Initiative: Directive on cross-border healthcare

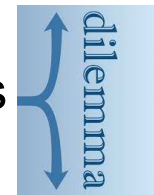
EU Health Prize for Journalists
2012
EU Health Prize For Journalists
Useful links
HealthyEU Newsletter



Challenges ahead

1. Continuous international crises
2. Dilemma of Demographic change

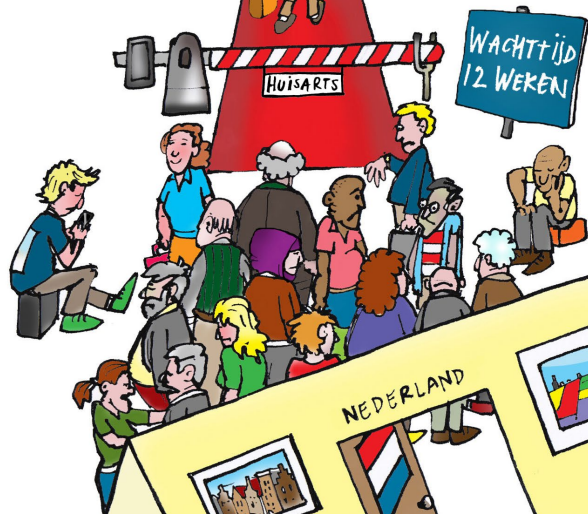
- More care&cure
- Less nurses&doctors



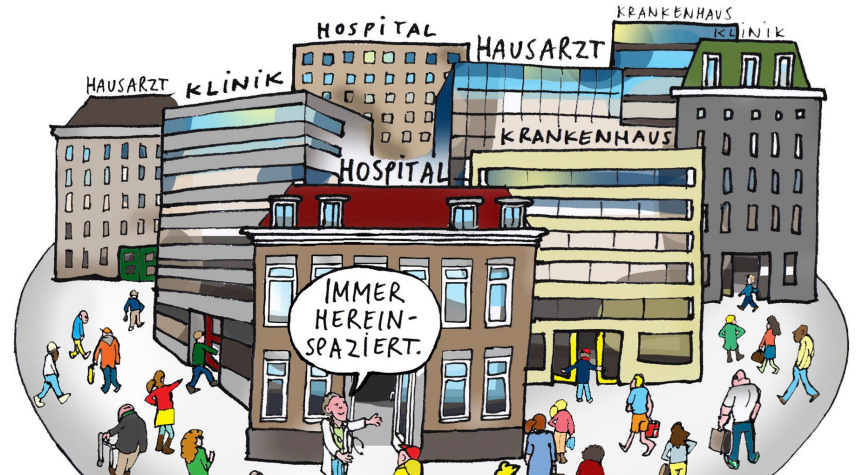
3. Generation change
4. Digitalisation and growing Tech/Reality-Gap
5. Sustainable Health



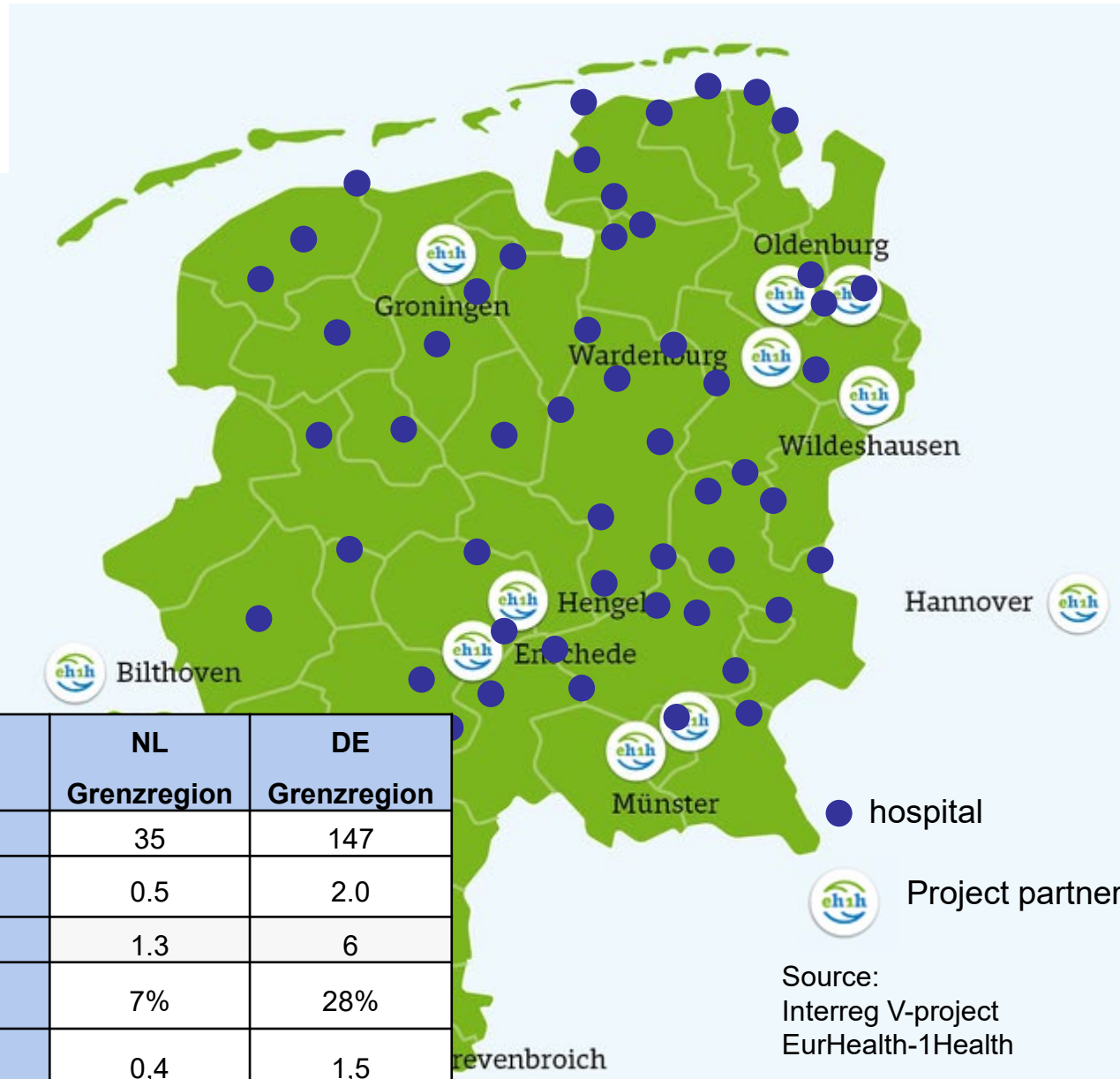
ZO DICHTBIJ EN TOCH ZO ANDERS:
EEN KANS OM VAN ELKAAR TE LEREN



SO NAH UND DOCH SO ANDERS:
EINE CHANCE VONEINANDER ZU LERNEN



Healthcare System comparison



Parameter	NL Grenzregion	DE Grenzregion
hospitals (ZKH)	35	147
Hospitals / 100.000 inh.	0.5	2.0
Beds/1.000 inh.	1.3	6
Stat. pat. /100 inh.	7%	28%
Doctors in practice /1000 inh	0.4	1.5

Source:
Interreg V-project
EurHealth-1Health



NOS

Nieuws ▾

Sport ▾

Uitzendingen



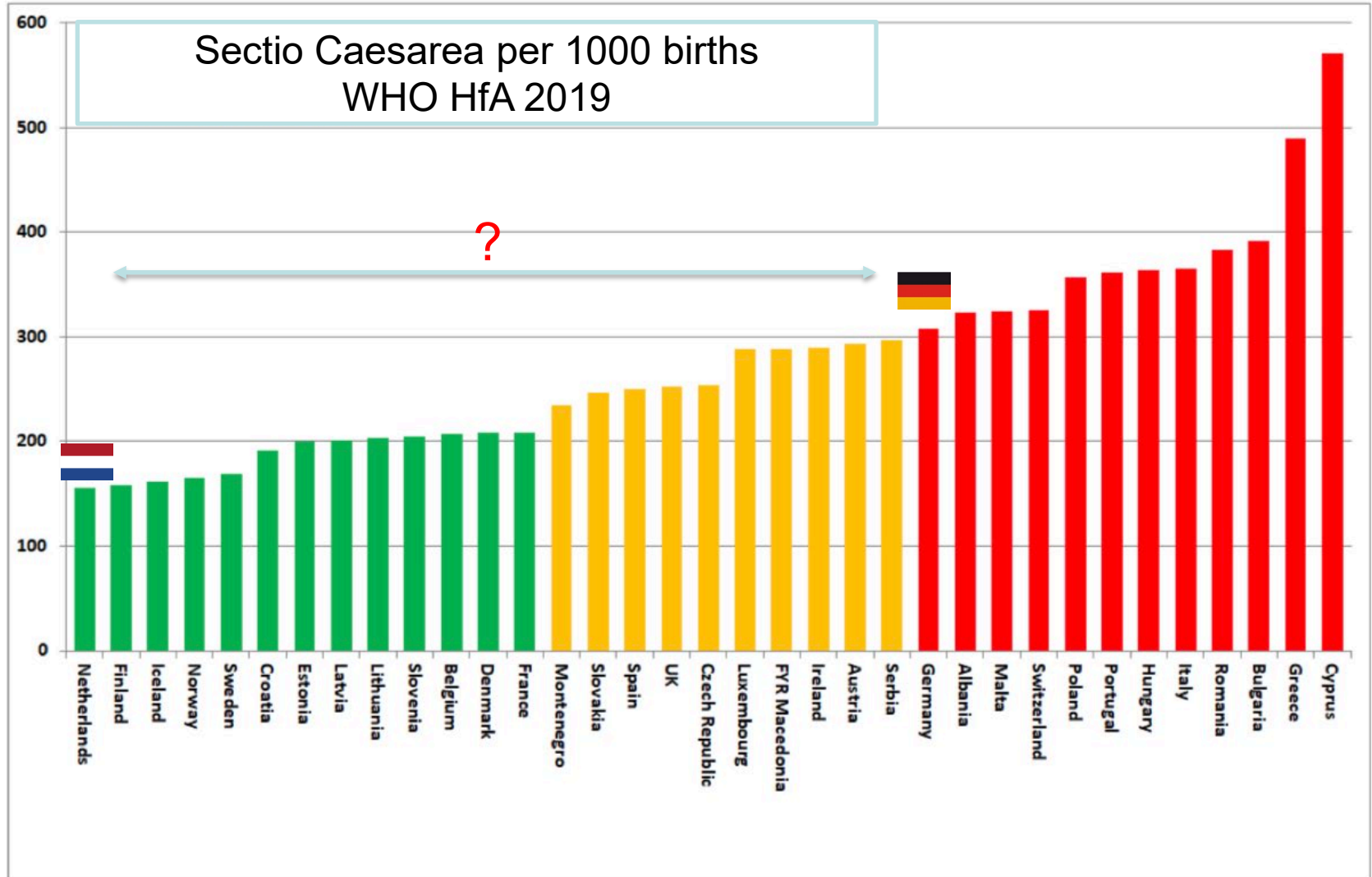
NOS NIEUWS · BINNENLAND · MAANDAG, 12:43

'Buitenlandse ziekenhuizen hard nodig bij wegwerken inhaalzorg en wachtlijsten'

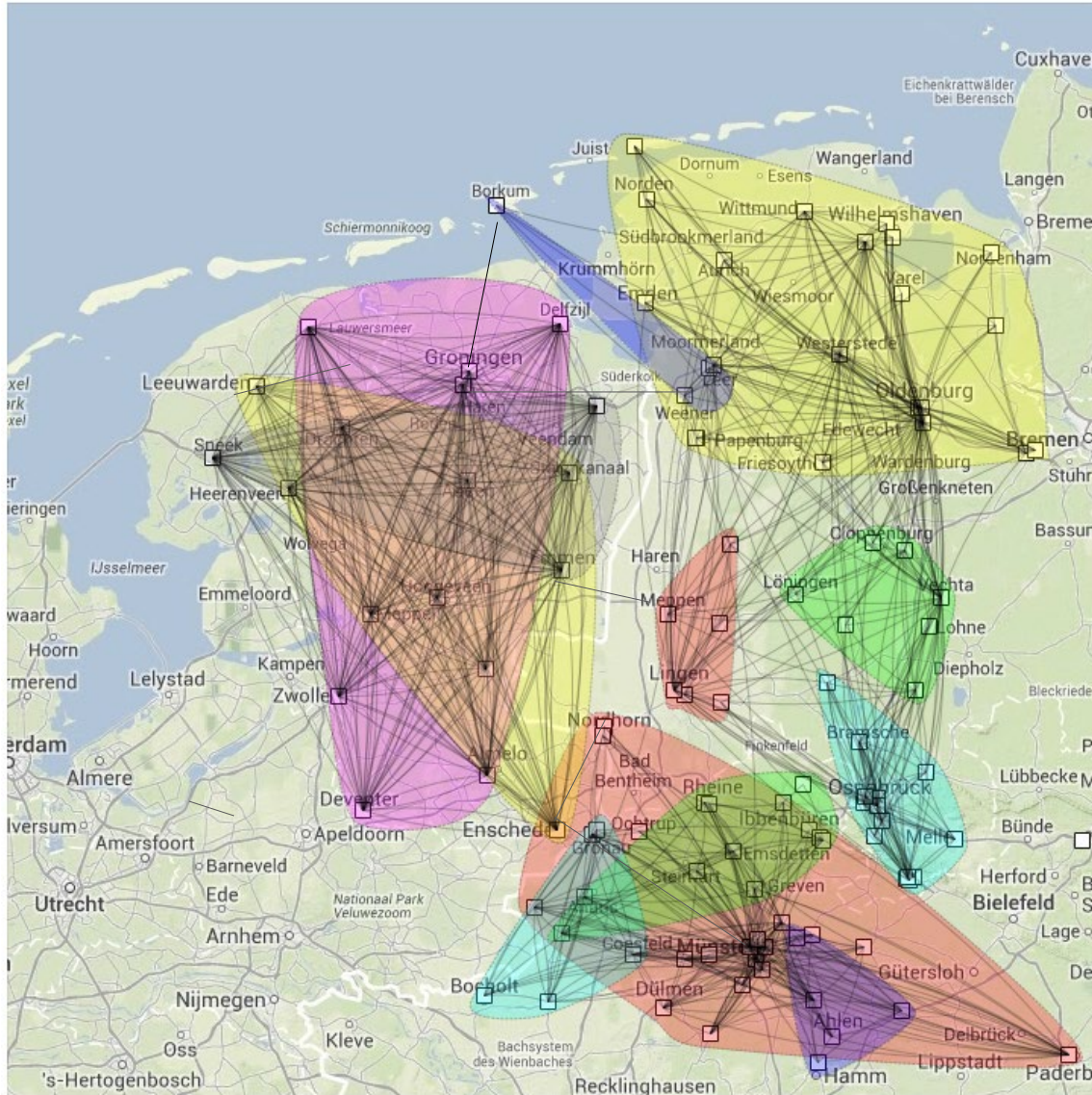


NOS, 7.6.2022

Differences ask questions



We have unique knowledge



Gezondheid in de regio



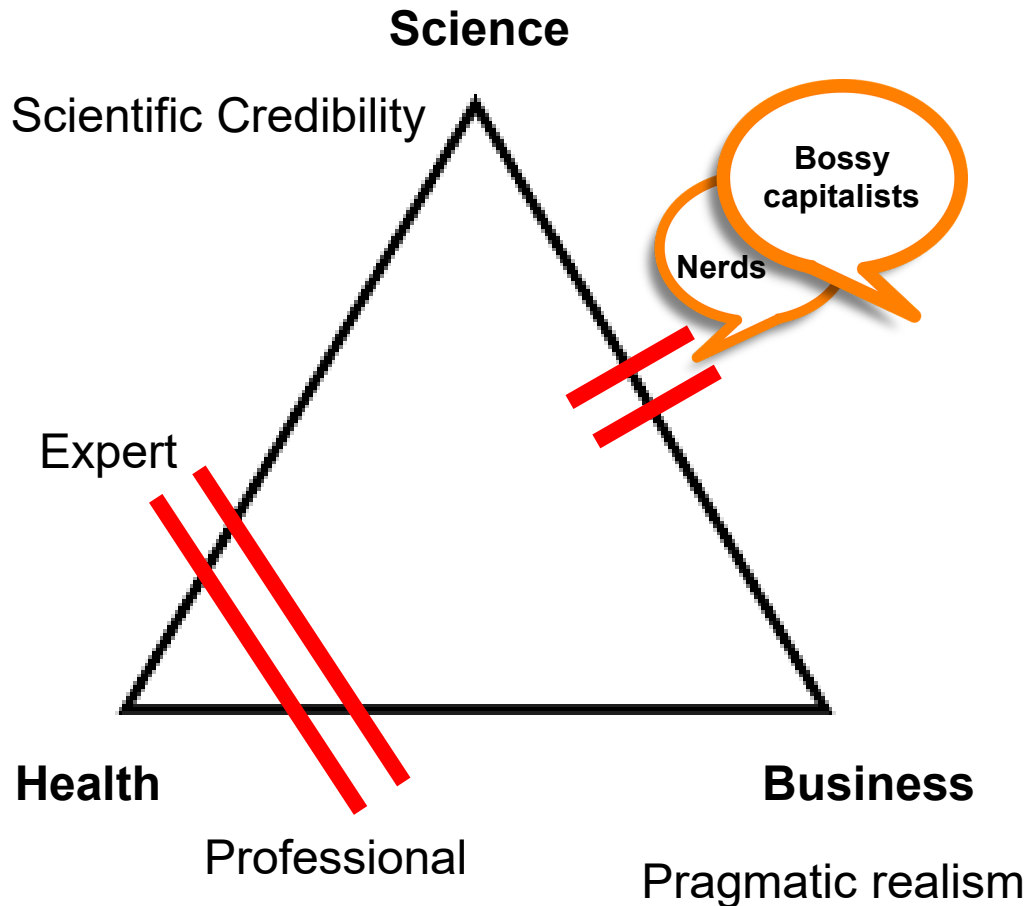
Patient-transfers have influence on our welfare
(data: Interreg V-Project EurSafety Health-net)

Sustainability in Healthcare

- Healthcare generates on a first instance cost
- Healthcare generates on a long run health, innovation and welfare



Crossborder means also overcoming the borders between



Old way:

- Funding
- Technology pushing
- Marketing

NEVER
CHANGE
A
WINNING
TEAM

...is the enemy of innovation

DEMAND



SCIENCE

BUSINESS

HEALTH

i

SUPPLY

Competence of crossing borders



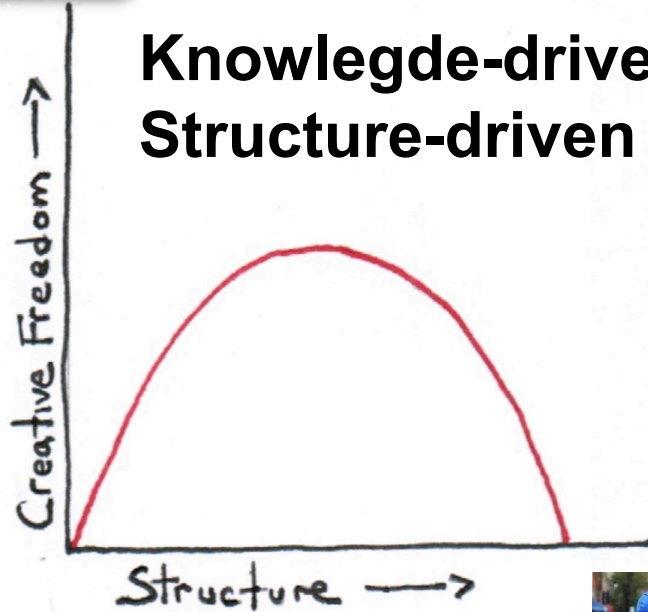
- Look for commonalities
- People crossing borders
- Common ideas and goals
- Intercultural competence
- Ambassadors, webbers, facilitators
- Trust



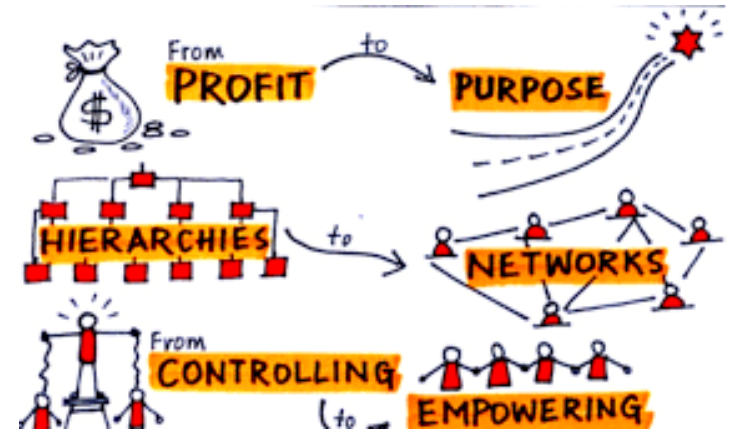
The trust equation

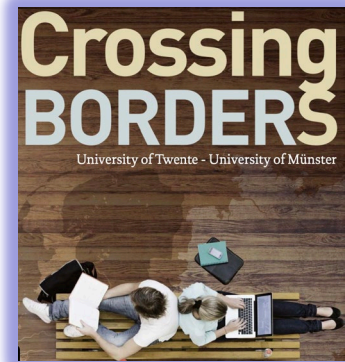
$$T = \frac{C + R + SF}{S_o}$$

Make your choice in the game!



Knowledge-driven “green webbers”
Structure-driven “blue facilitators”





Common Training

Common Care



Common Research



Common Entrepreneurship





Ihr schneller Weg zum Telekonsil

Ein Service für Mediziner:innen auf Initiative des Ministeriums
Gesundheit und Soziales des Landes Nordrhein-Westfalen

Jetzt Telekonsil anfragen



Zoom-in-the Expert



Dr. Maximilian Kückelhaus presents the new method in a dry-run training session. The operations robot (right) is networked with a robotic microscope (left).

WWU - Peter Leßmann

Robot-supported microsurgical operations on humans

Münster surgeons use new operating method for the first time anywhere in the world.



September 12, 2022

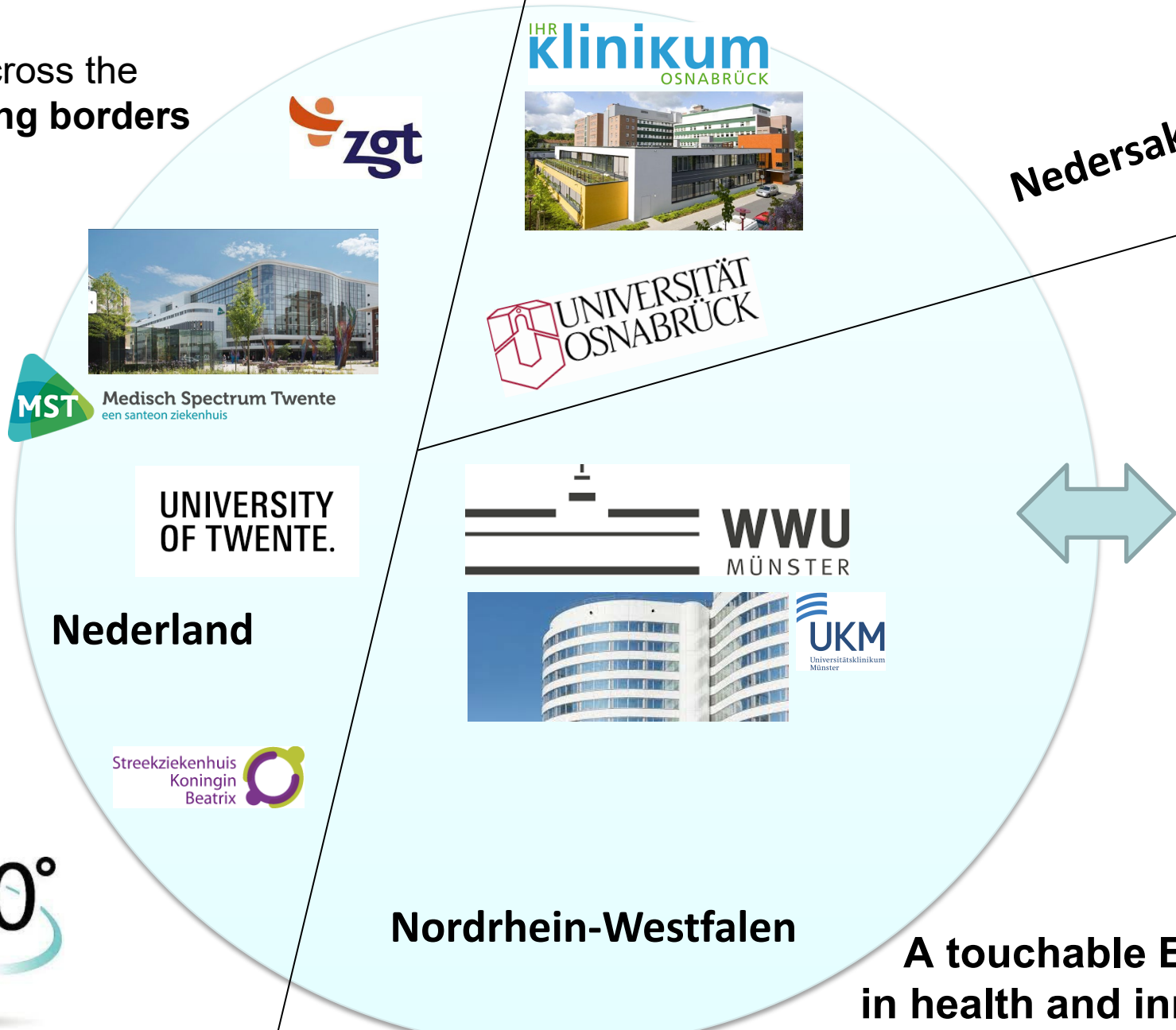


Posted by Elizabeth Engler Modic

Robotics and AI

The border is our USP

Trust across the remaining borders



Nedersaksen

UNIVERSITÄT OSNABRÜCK

WWU MÜNSTER

MST

Medisch Spectrum Twente
een santeon ziekenhuis

UNIVERSITY OF TWENTE.

Nederland

Streekziekenhuis
Koningin Beatrix

Nordrhein-Westfalen

A touchable Europe
in health and innovation

360°



*Think out-of-the-box
and across-the-border*

