



Beyond the bubble: The power of collaboration

Guillén Fernández, HealthTech Nexus

HealthTech NEXUS

HealthTech NEXUS

future-proofing healthcare through
technological excellence

Guillén Fernández

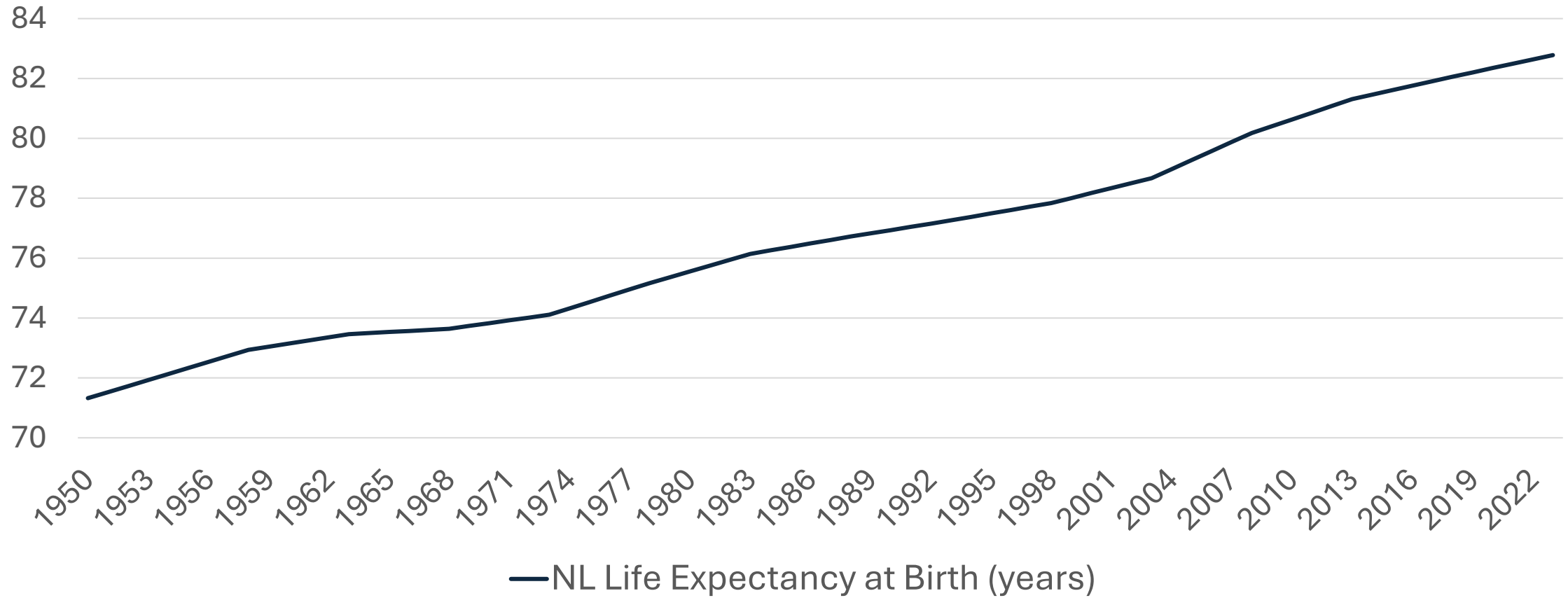
Radboudumc | UNIVERSITY OF TWENTE.



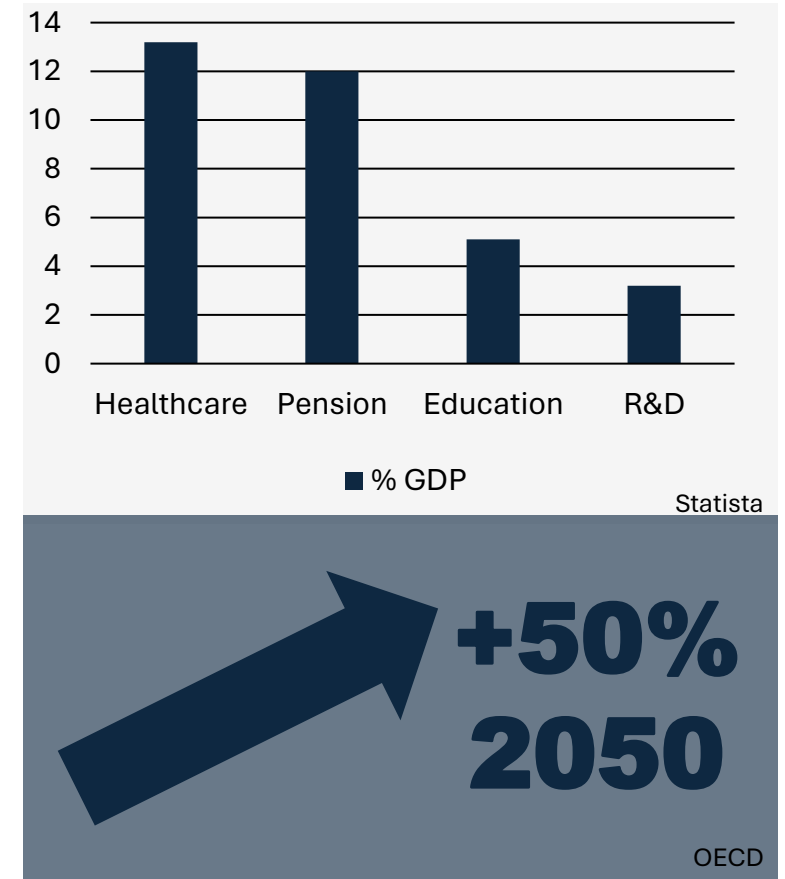
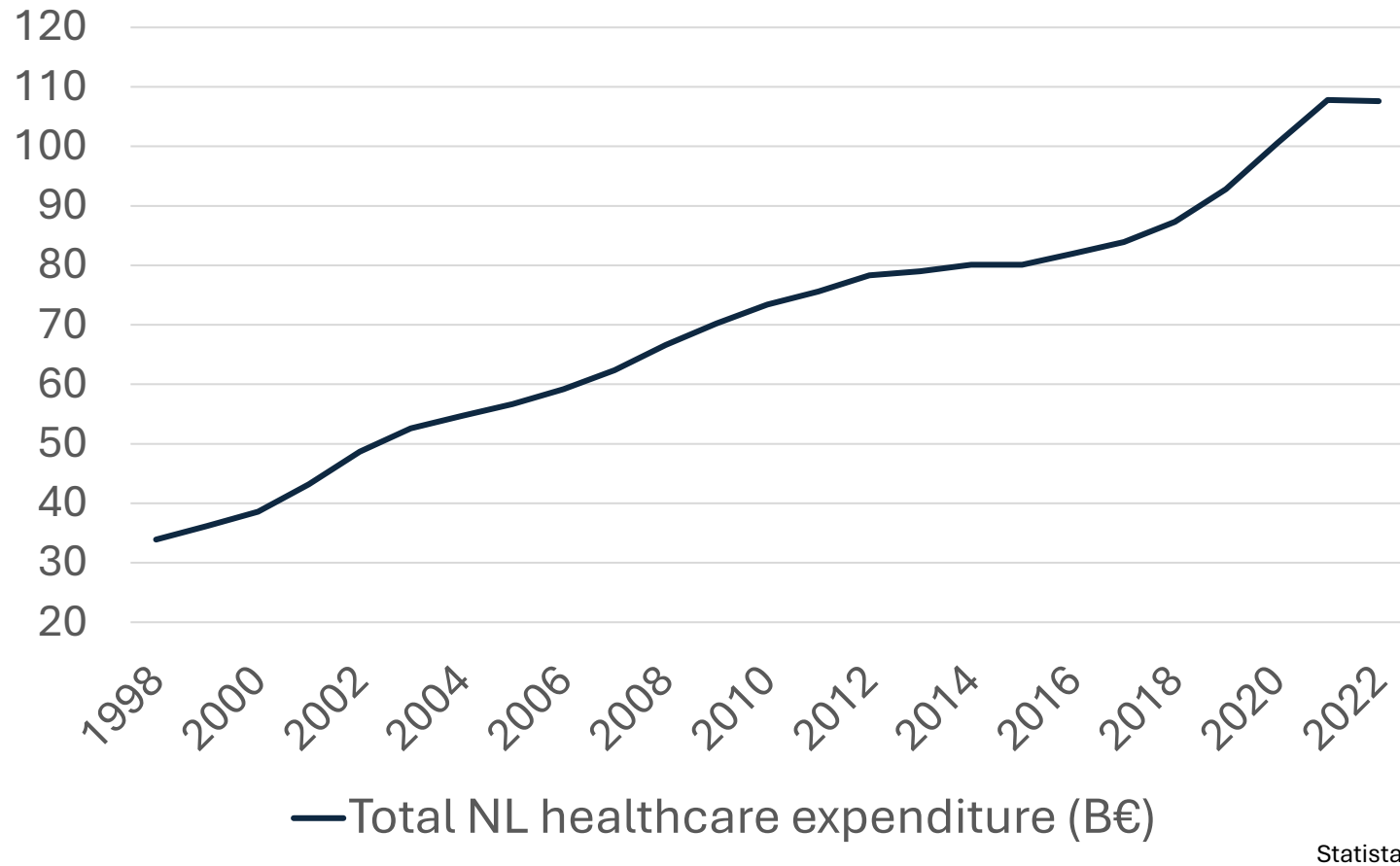
Excellent, accessible care



The trend - the bright side



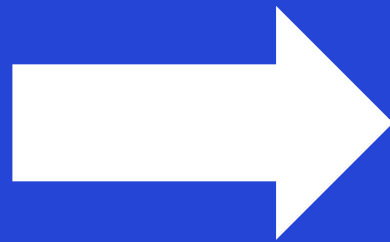
The trend - the dark side



Turning the trend

QUALITY

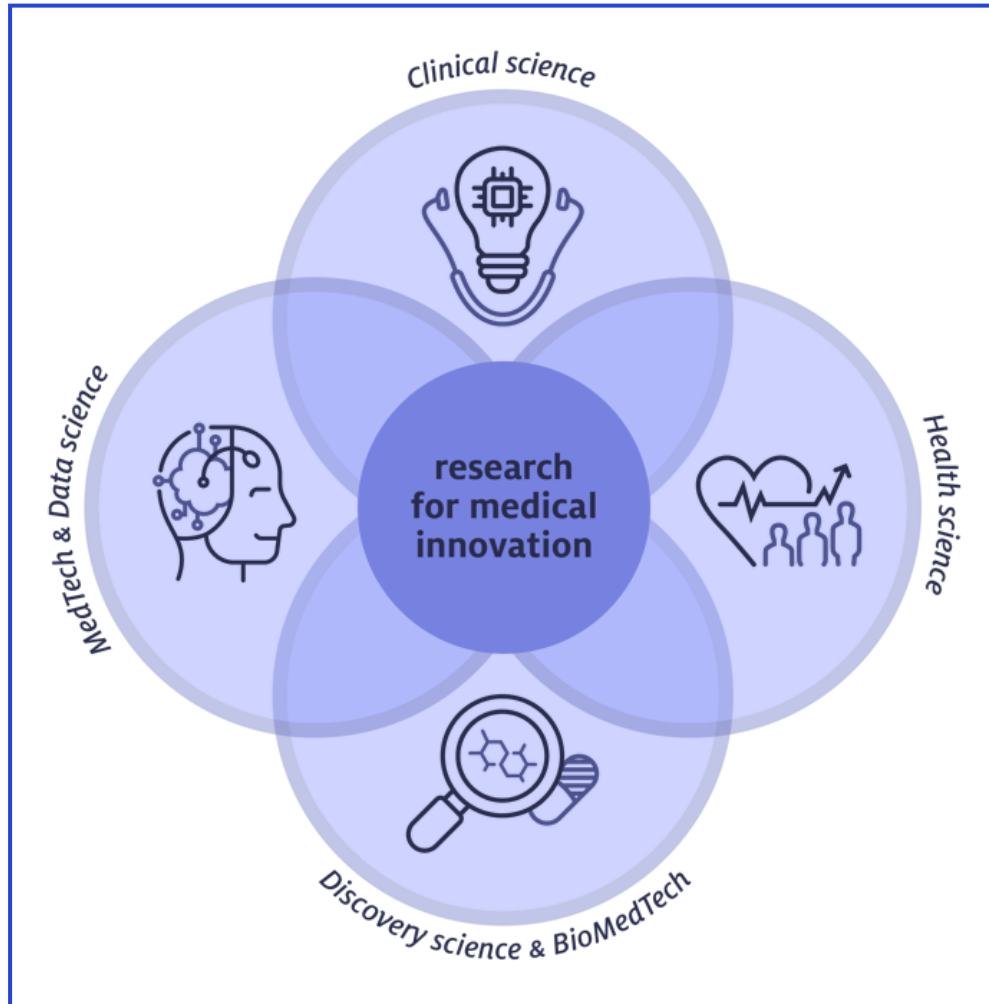
QUALITY



EFFICIENCY

EFFICIENCY

Innovating healthcare by research and technology

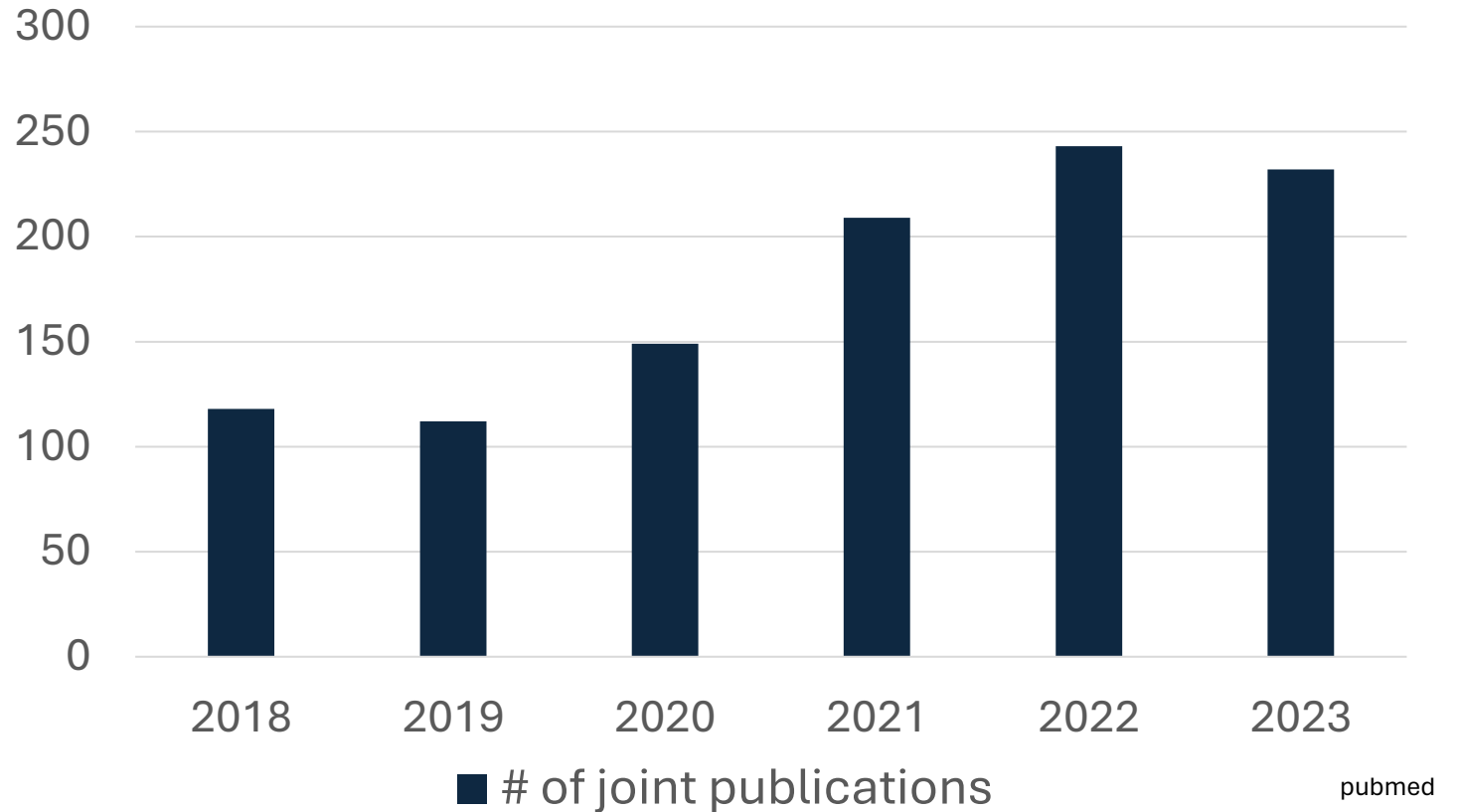


HealthTech NEXUS
future-proofing healthcare
through technological excellence

Turbo: Seed fund for new collaborative projects

- 8 rounds
- 168 submitted proposals
- 32 honored proposals

**>19M€
grants**



Active Collaborations

Biological Research

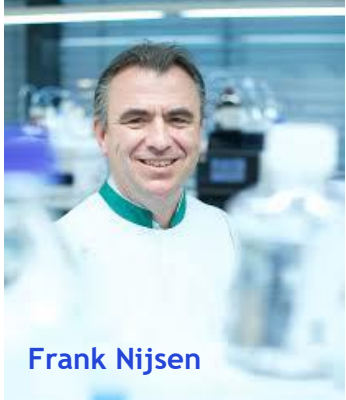
- **Tissue modeling:** Neuron, heart, retina, liver, bone, and aortic valve "organ-on-chip" models. Malaria and extracellular vesicles research
- **Physiology modeling:** "Exercise on a Chip," kidney, and perinatal physiology modeling, and circulating tumor cell studies

Medical Technology

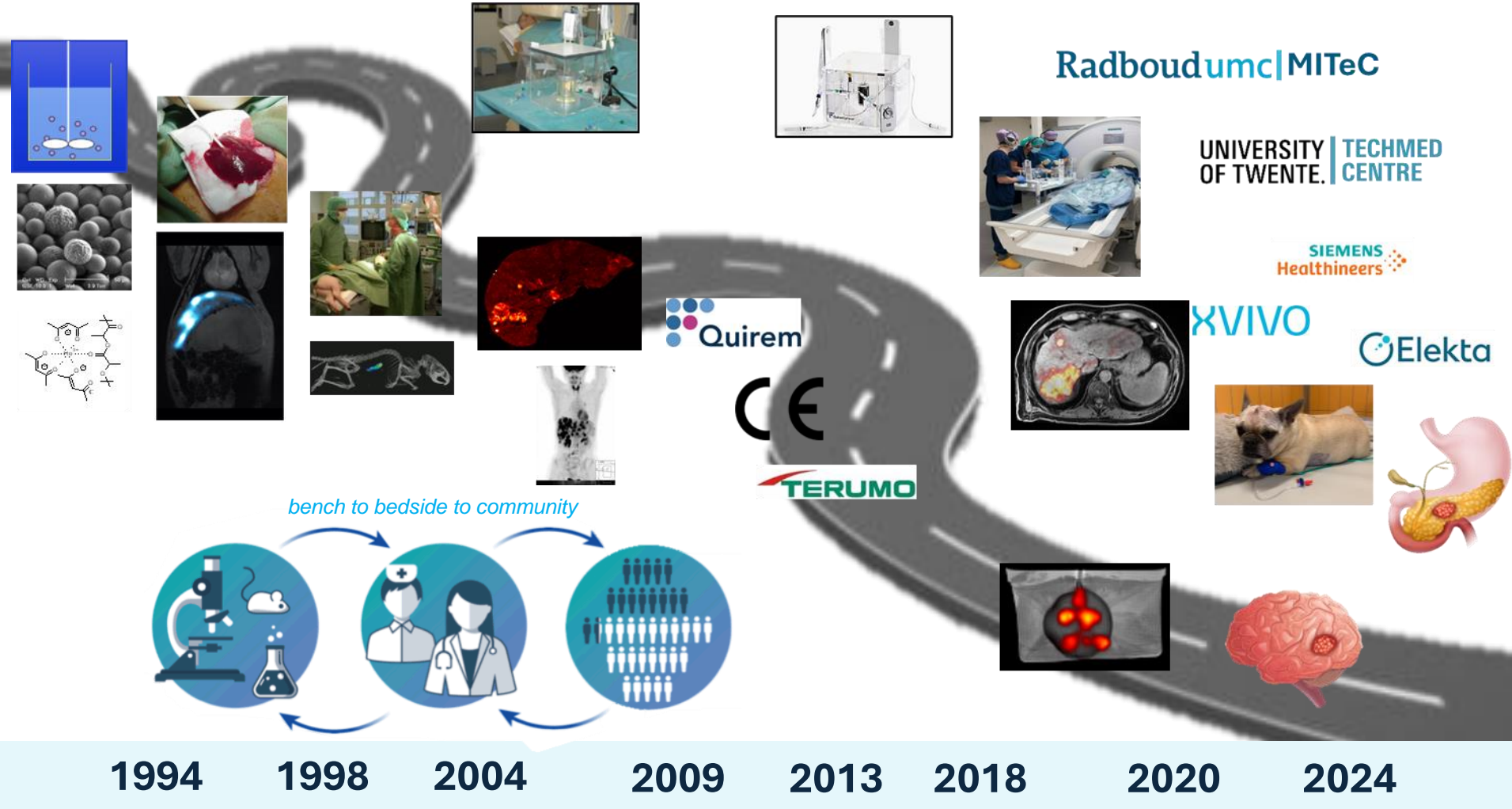
- **Wearable technology:** Wearable tech to predict adverse events, mental health monitoring, and gait/postural control
- **Minimally Invasive & Image-Guided Interventions:** Robotics, imaging, and optoacoustic technologies for surgery
- **Perinatal & diagnostic Innovations:** Artificial placenta, AI-enhanced ultrasound



Translational medicine: From idea to impact

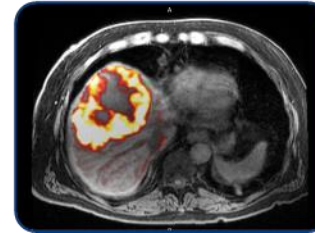
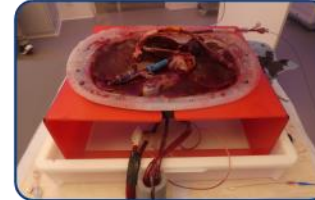
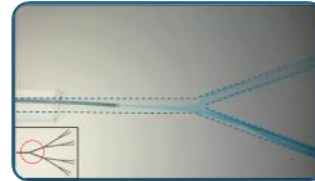


Frank Nijssen



Translational medicine: From idea to impact

UNIVERSITY OF TWENTE. | TECHMED CENTRE



Radboudumc | MITec



Frank Nijsen

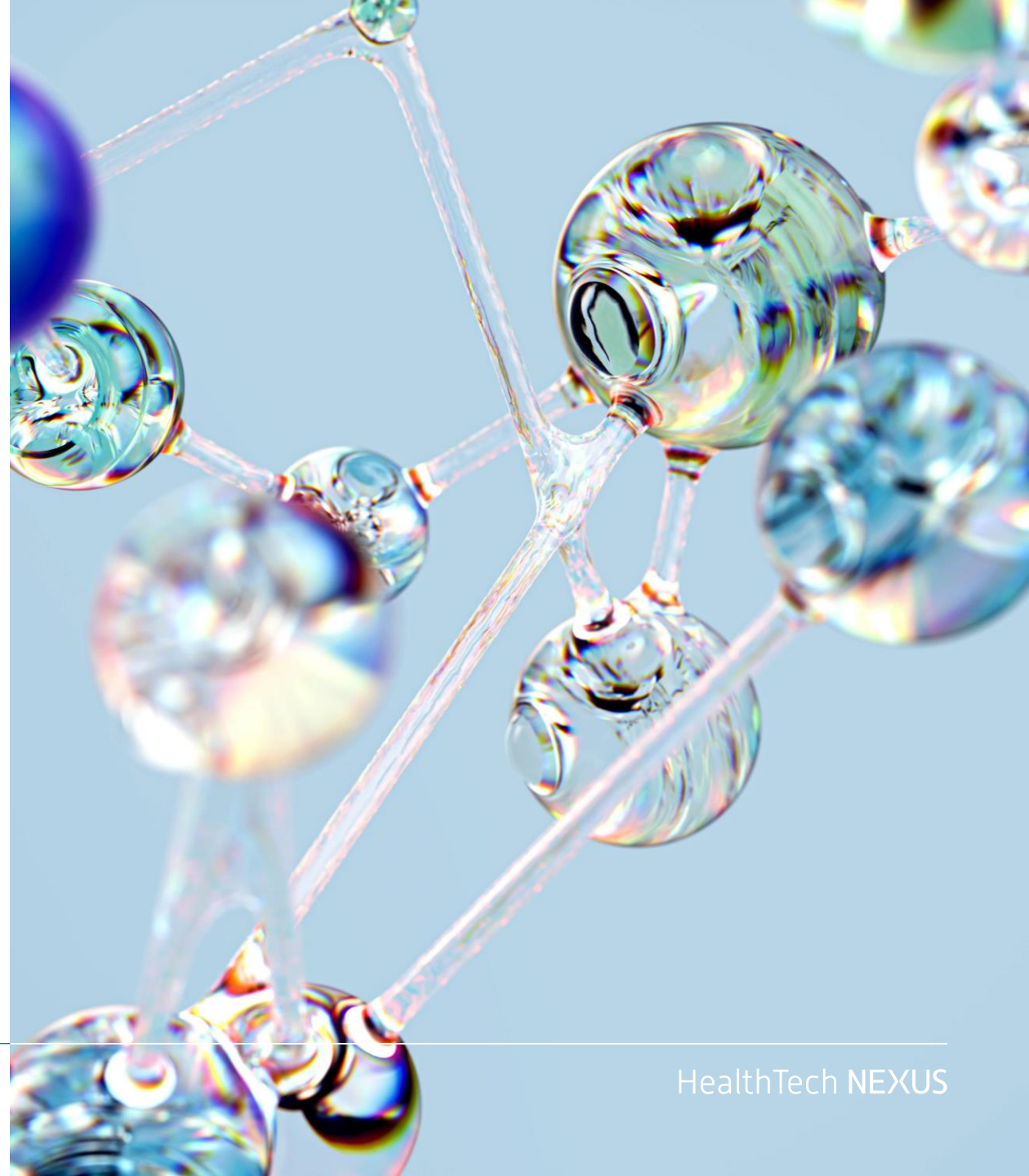
Combining bubbles and spheres to optimize liver cancer treatment



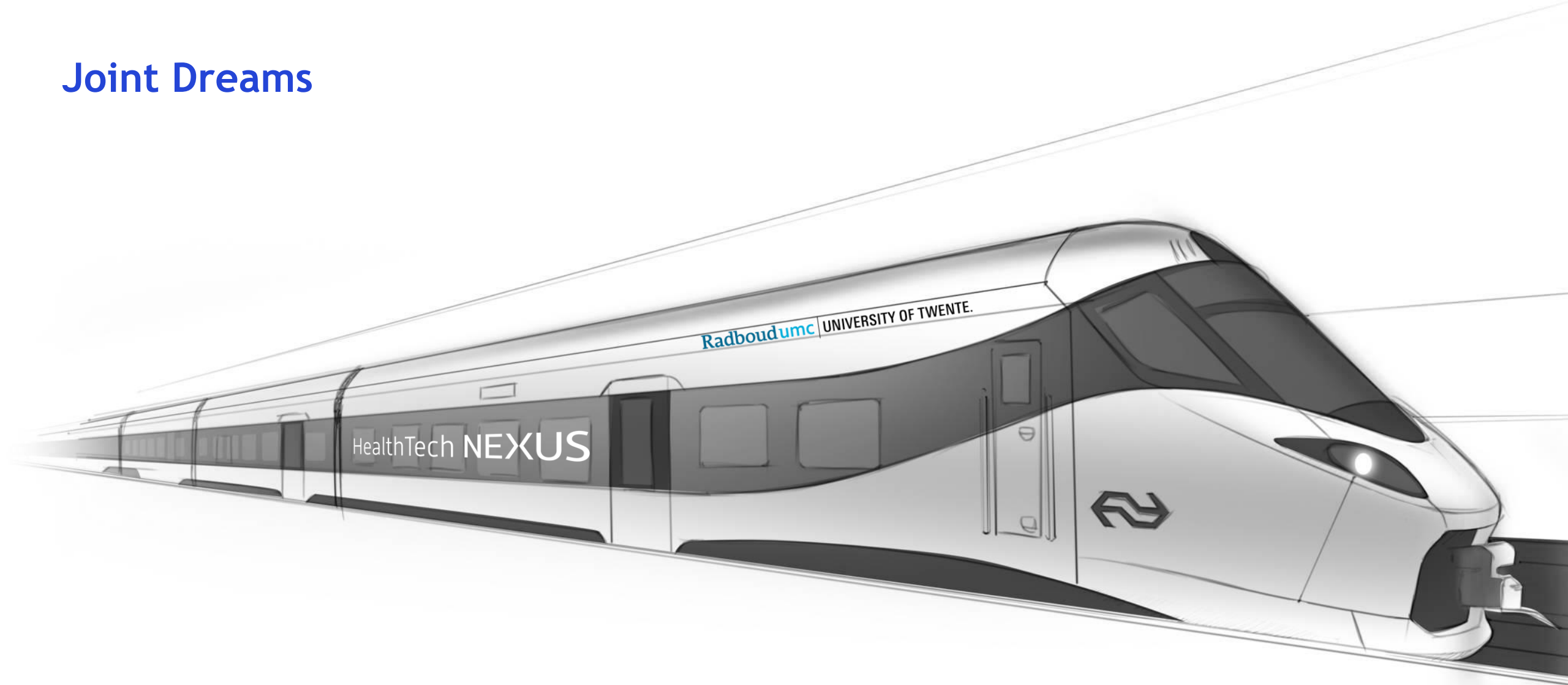
Frank Nijsen (Radboudumc Medical Imaging) & Erik Groot Jebbink (UT)

Joint Plans

- Positions
- Projects
- Infrastructure
- Lobbying



Joint Dreams



future-proofing healthcare through technological excellence

HealthTech NEXUS