

ECMC

Accelerating Remote Patient Management



THE 2022 TECHMED EVENT



EHEALTH@UTWENTE: PEHT&ECMC

Hermie Hermens
University of Twente



THE 2022
TECH-MED
EVENT

The start

@ UTwente

30-40% of all research
is health related

2018: Policy Decision:
To integrate monodiscipline research into
strategic research programs across domains

2019: Start of Personalised eHealth
Technology Program

UNIVERSITY
OF TWENTE. | TECHMED
CENTRE

Mission

To create innovative personalised eHealth services that substantially contribute to a **sustainable**, **efficient** and **effective** healthcare for all citizens, especially for those with chronic conditions.

Keywords

Supporting patients in selfmanagement, vitality and independent living,
Supporting clinicians in their decision making

by strong multidisciplinary co-creating the solutions
Covering actively the whole translational chain

AMBITION

In 5 years, we aim to be **THE centre for eHealth technology in the Netherlands and one of the major centres in Europe**

covering the whole translational chain from development towards contributing to sustainable implementation in daily care.

BUILDING THE UNIQUE MULTIDISCIPLINARY COLLABORATION

Involving 8 different disciplines:

- Biomedical Signals and Systems
- Interaction Design
- Human Media Interaction
- Pervasive Systems
- Psychology, Health and Technology
- Computer Science
- Health Technology Science Research
- Design lab (Creative Technology)

+ revolving Postdocs
+ many projects



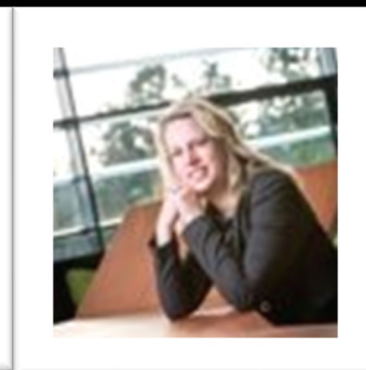
Carine
Doggen
HTSR-BMS



Miriam
Vollenbroek
BSS - EWI



Lisette van Gemert
BMS- PGT



Mascha vd Voort
DesignLab



Maurice van
Keulen
EWI-DS



Paul Havinga
EWI-PS



Dirk Heylen
EWI-HMI



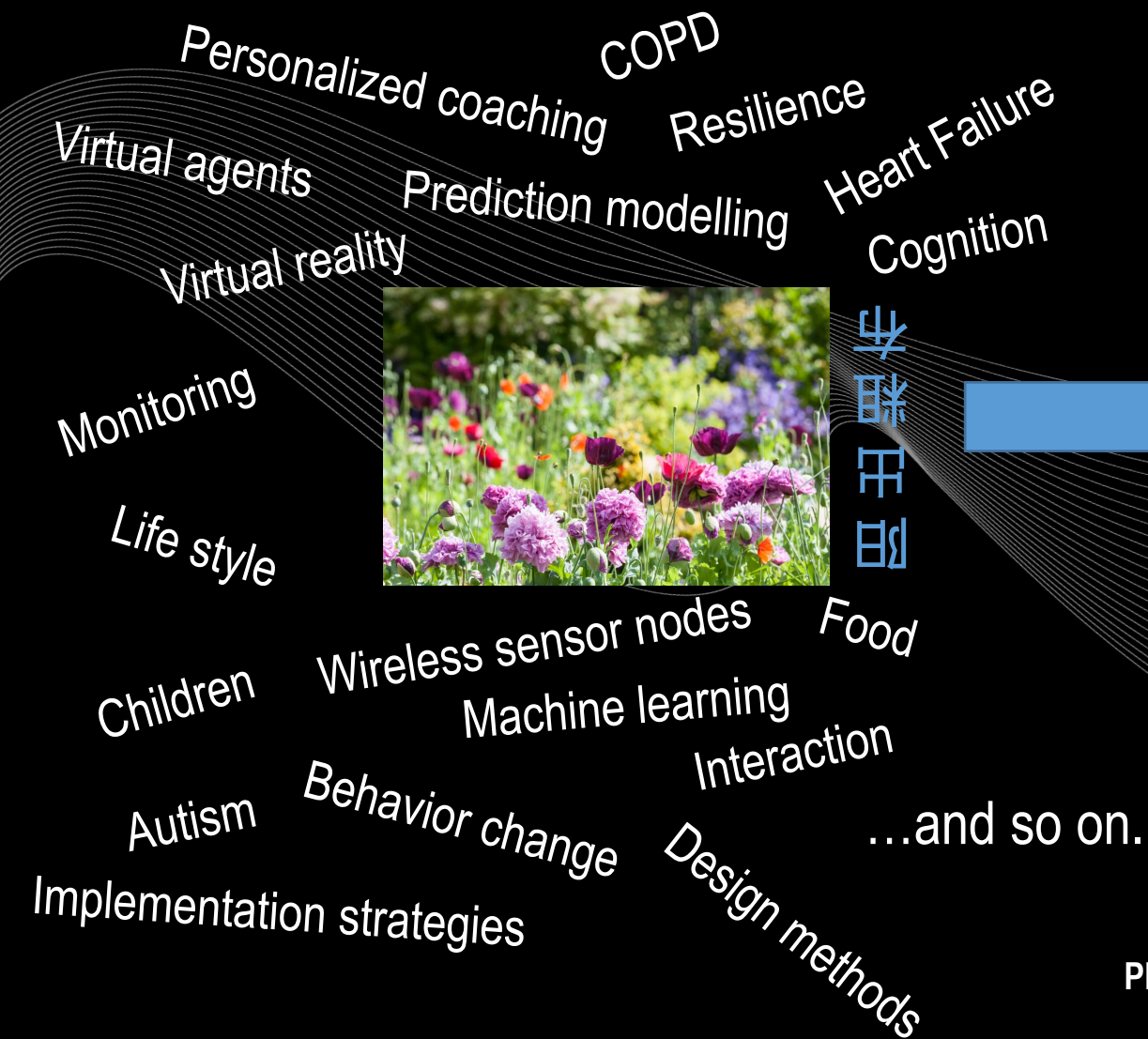
Geke Ludden
ET-IxD

PERSONALIZED EHEALTH TECHNOLOGY
Strategic research programme

UNIVERSITY
OF TWENTE. | TECHMED
CENTRE

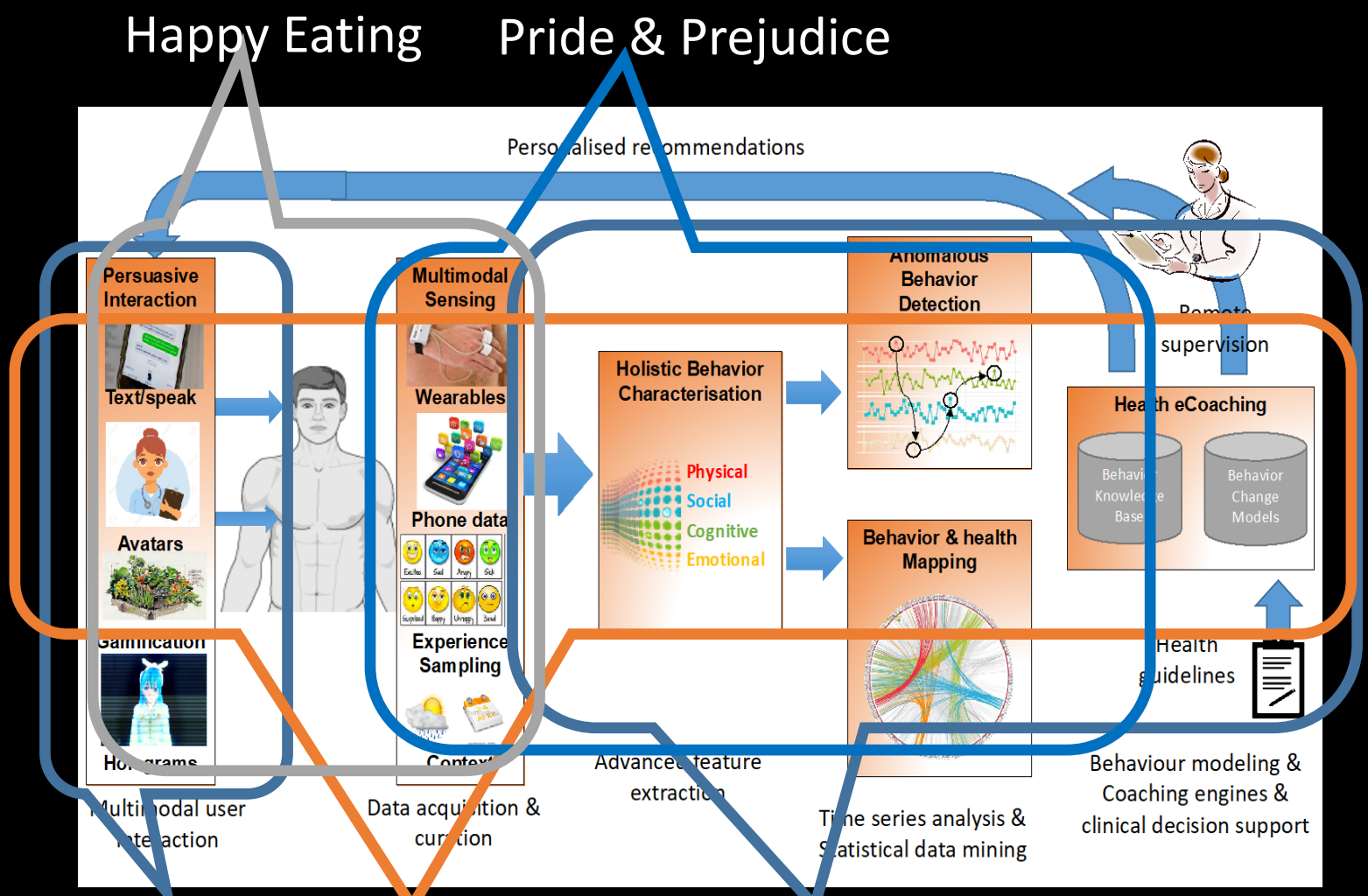
Choosing research themes

THEMES



- Diabetes
- Rehabilitation
- Prevention
- COPD/Astma
- Nursery:
 - Rare diseases
 - Oncology
-

Creating mass on a chosen theme: diabetes



Happy Eating

Pride & Prejudice

Couch

eManager

EDIC

Omvang > 3 ME

FACILITIES & SERVICES

- Acquisition Machine
- The eHealth House
- Dedicated Revolving postdocs
- IT infrastructure
- Network: meetings and workshops

FACILITIES & SERVICES

ACQUISITION MACHINE

Way of building proposals together

- Believe: success in healthcare is only possible with a multidisciplinary team
- Creating awareness, brainstorm sessions, dedicated workgroups supported by TecMed and EU office
- > 50 project proposals submitted
- Many (large) grants received (H2020, NWO etc)



EHEALTH HOUSE, AN UNIQUE FACILITY

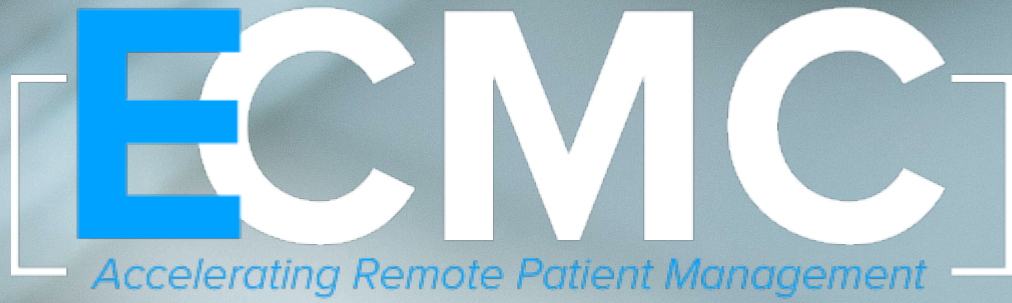
OUR FULLY FUNCTIONAL SIMULATED LIVING ENVIRONMENT

- A safe controlled environment for **ideation, experimentation**
- Facilitating Translational research: from ideation to implementation
- Open for proposals to demo's, research, educational activities, sponsorship...



EC
ch programme

OF TWENTE. | CENTRE

A close-up photograph of a person's hand interacting with a smartwatch. The watch is white with a black screen displaying the time '5:42', a notification for '5:00-6:00PM' from 'Apple' at '1811 William Stre...', and a weather widget showing '17°'. The person is wearing a blue long-sleeved shirt. The background is a blurred, light-colored surface.

Top expertise, facilities and services:
Fast and effective route to market for
eHealth products & services

Founding partners: Utwente, TNO, NeLL

Over 30 regional/national partners

Comprises: Knowledge Center, One stop Living labs, Ecosystem

Three main functions

1. Expert Centre

- To address all your questions and more ..., for fast and high quality product/service development
- Building upon established excellent science PeHT, involving 8+ research groups
- Adding constantly new knowledge from our co-founders (TNO, NELL) and network partners

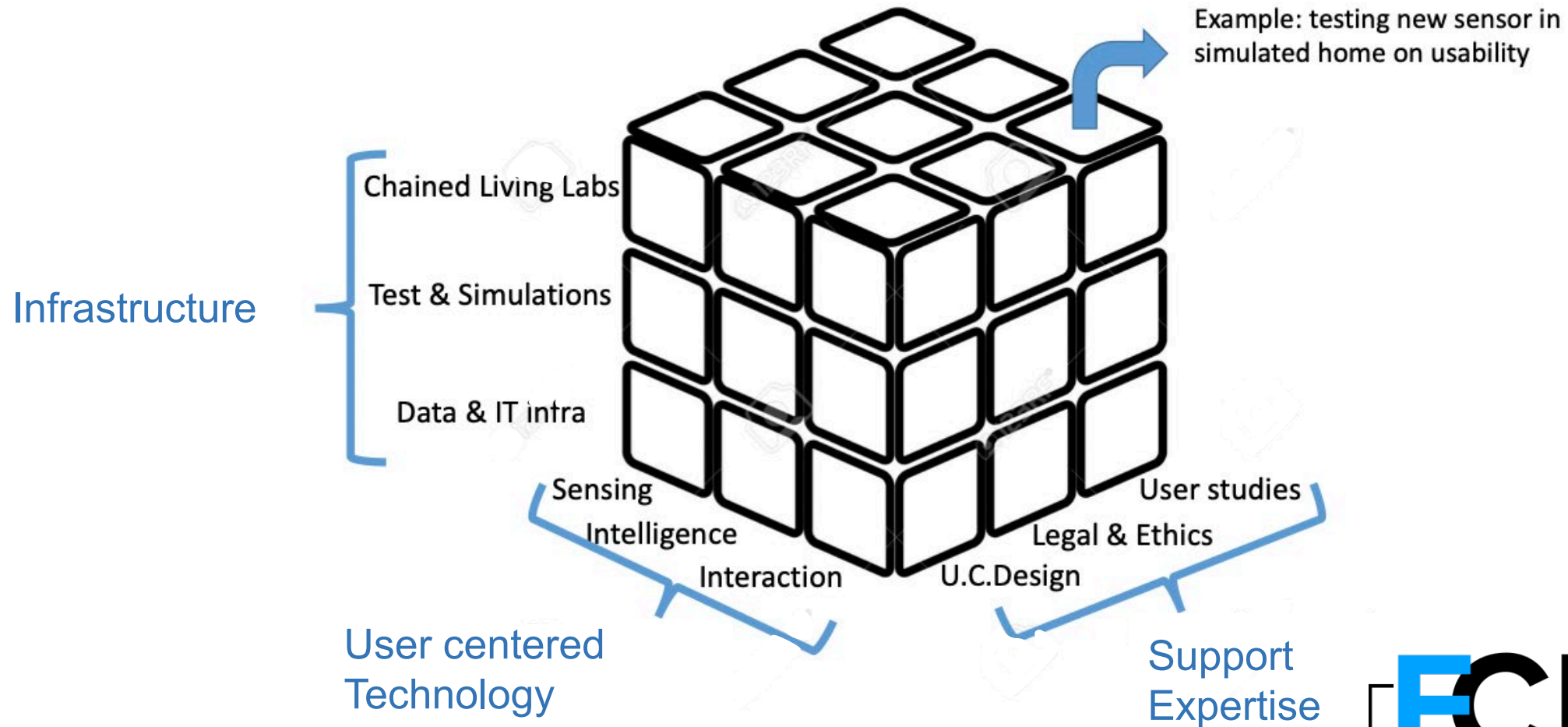
2. One stop Living Labs

- One stop Shop for standardised high quality experimentations during product and service development trajectory
- Covering support during prototype development, safety testing, small scale usability testing and large scale implementation

3. A vivid ecosystem

- Mixing with academia, education, sme's, health care specialists and patient representation

eCMC offering services



Living Labs ecosystem

Strongly interconnected labs, facilitating fast and effective route to market

