A person in a white lab coat is shown from the back, interacting with a digital interface. The interface consists of a grid of hexagonal icons, each containing a different symbol: a DNA helix, a heart with a pulse line, a person silhouette, a microscope, and a globe. The background is a dark blue gradient with a faint world map outline.

**THE** SHAPING A  
**TECHMED** HEALTHY  
**EVENT** FUTURE

14:45-16:00 PIHC Michel van Putten

A fluorescence microscopy image of a neuron. The cell body and its processes are stained green, while the nucleus is stained blue. Numerous small red puncta are visible along the green-stained processes, likely representing specific markers or organelles. The background is dark, making the stained structures stand out.

# AI and ultralong EEG in epilepsy

Michel van Putten

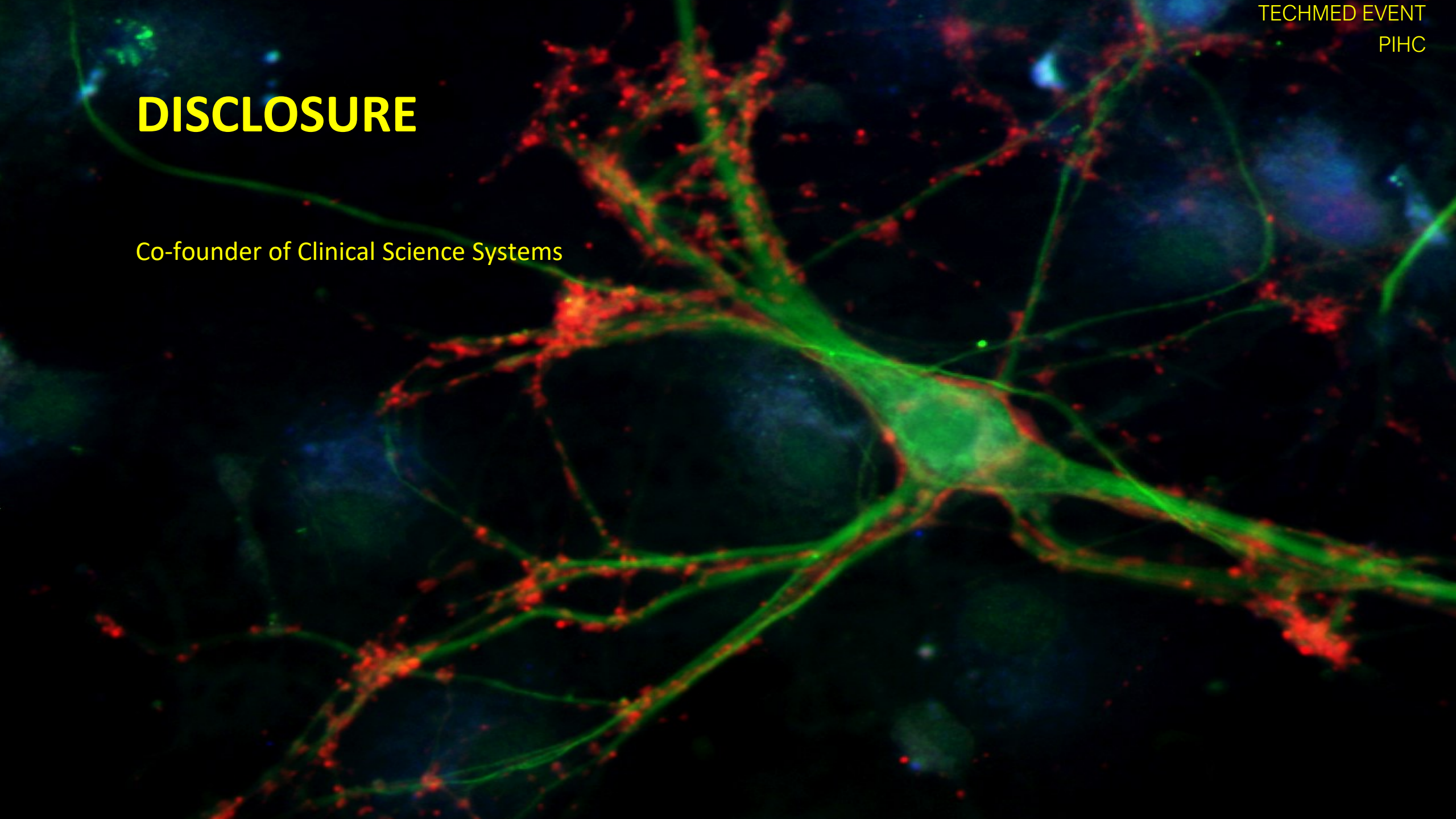
CNPH group  
University of Twente &  
Medisch Spectrum Twente  
Enschede, the Netherlands

[m.j.a.m.vanputten@utwente.nl](mailto:m.j.a.m.vanputten@utwente.nl)

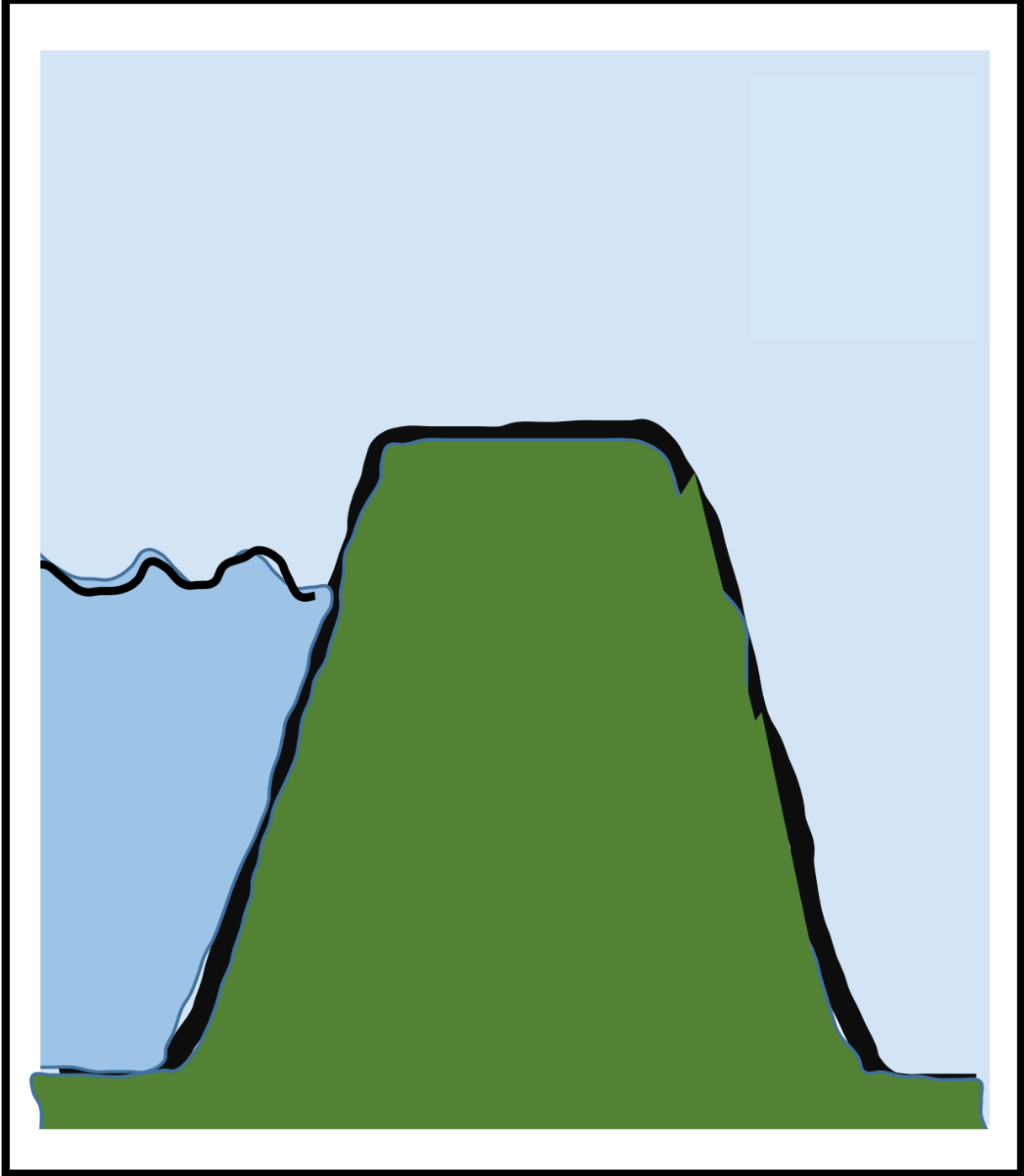


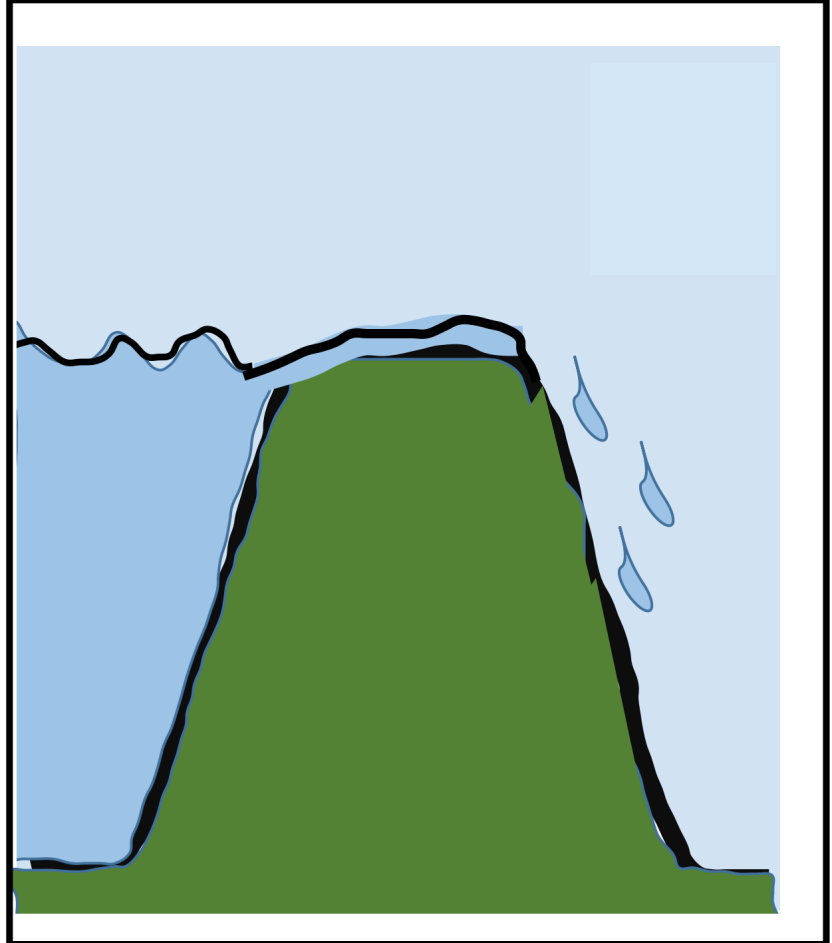
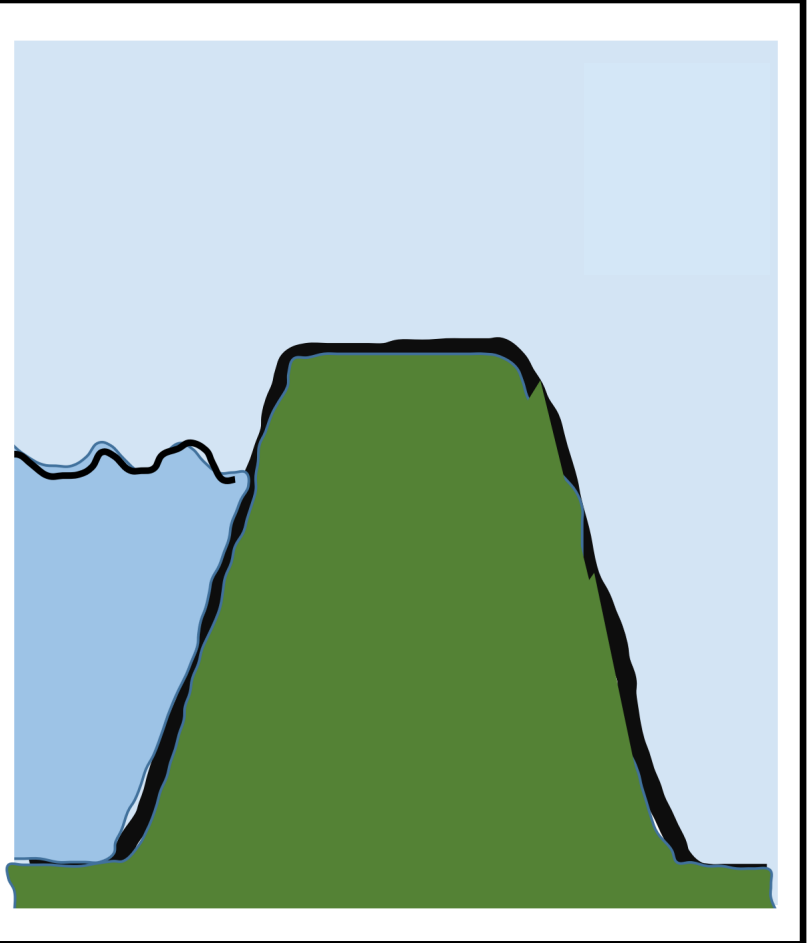
# DISCLOSURE

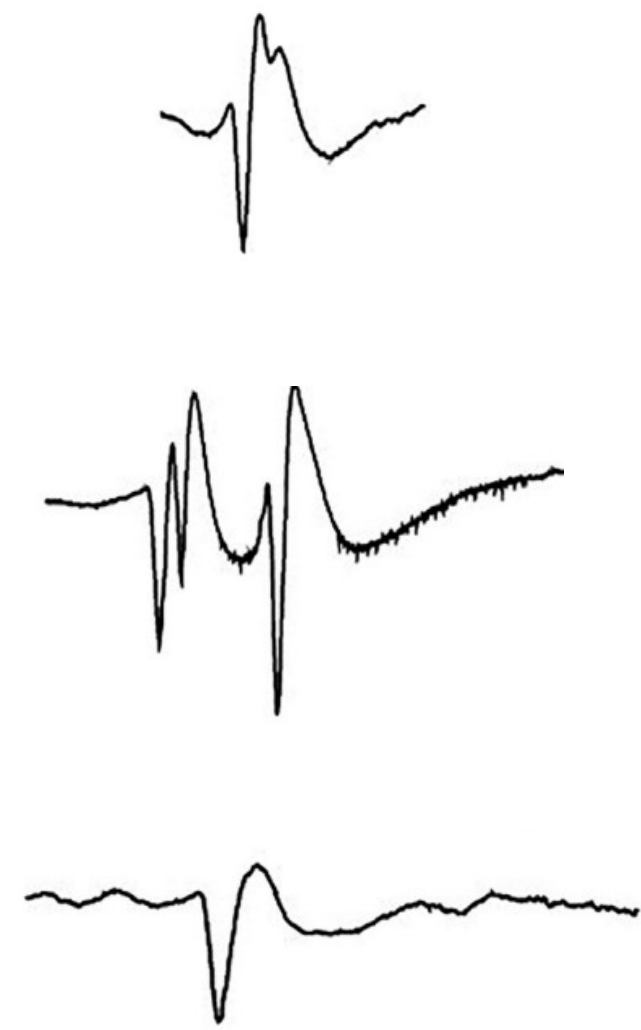
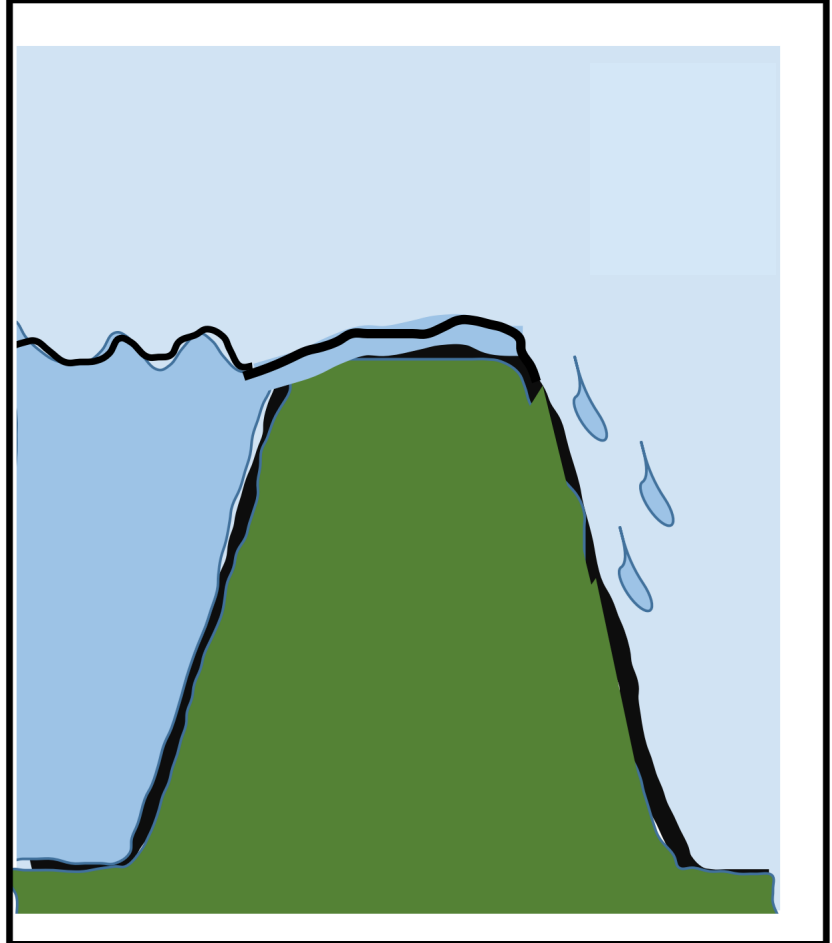
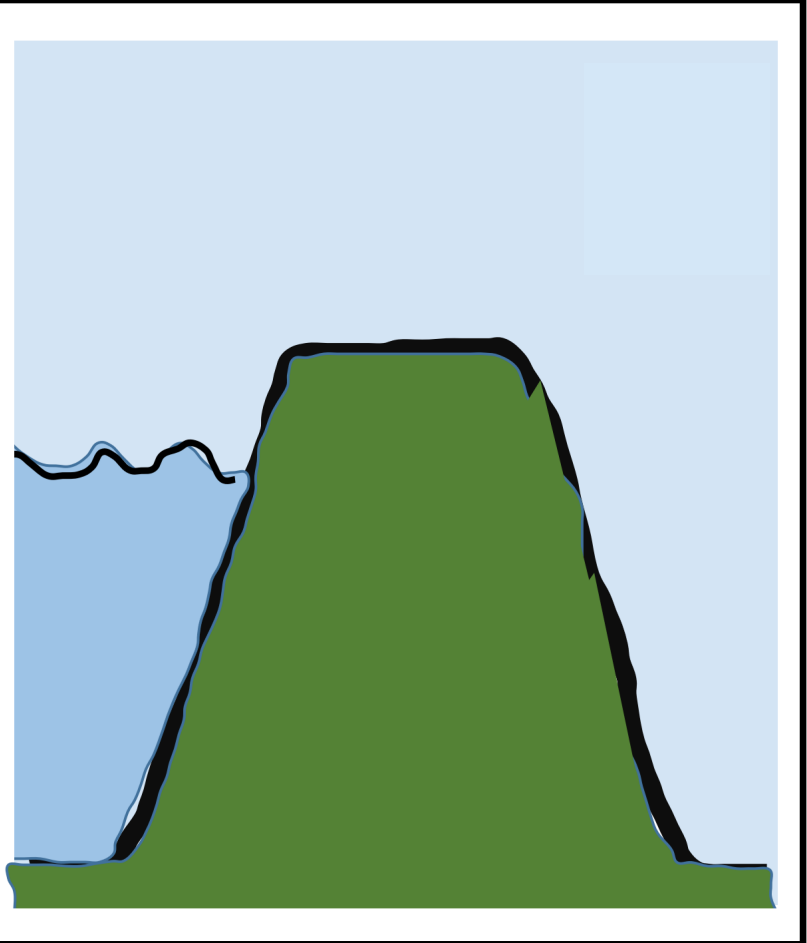
Co-founder of Clinical Science Systems









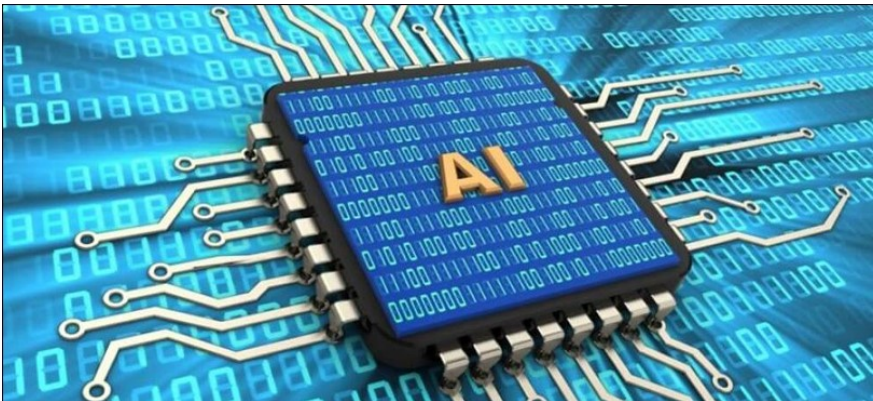
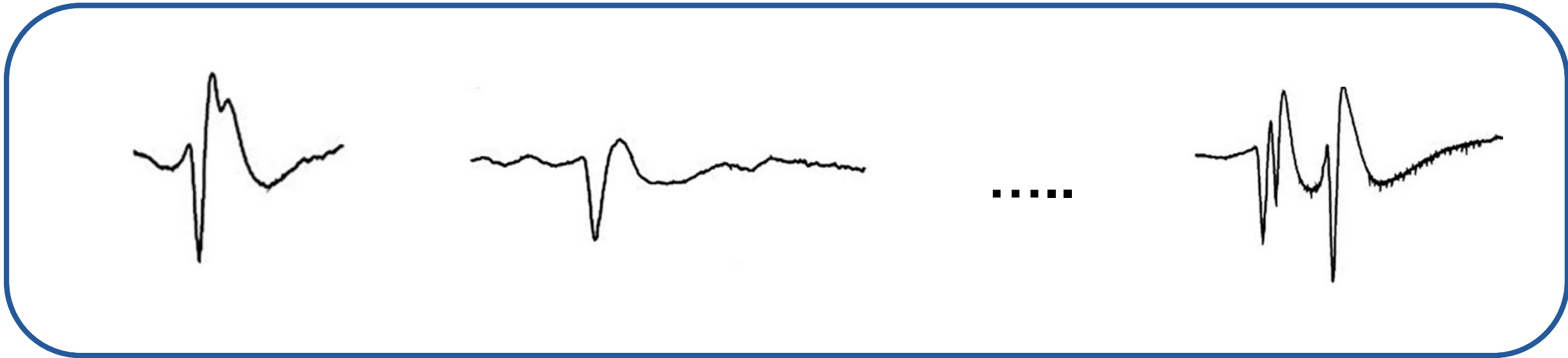


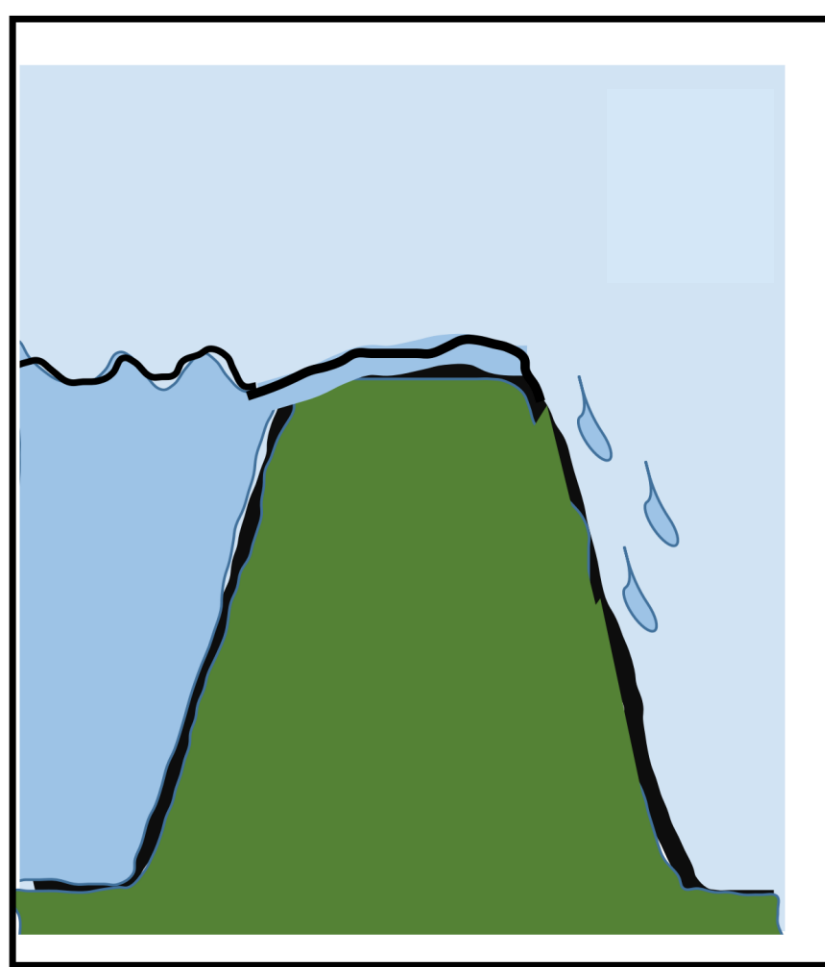
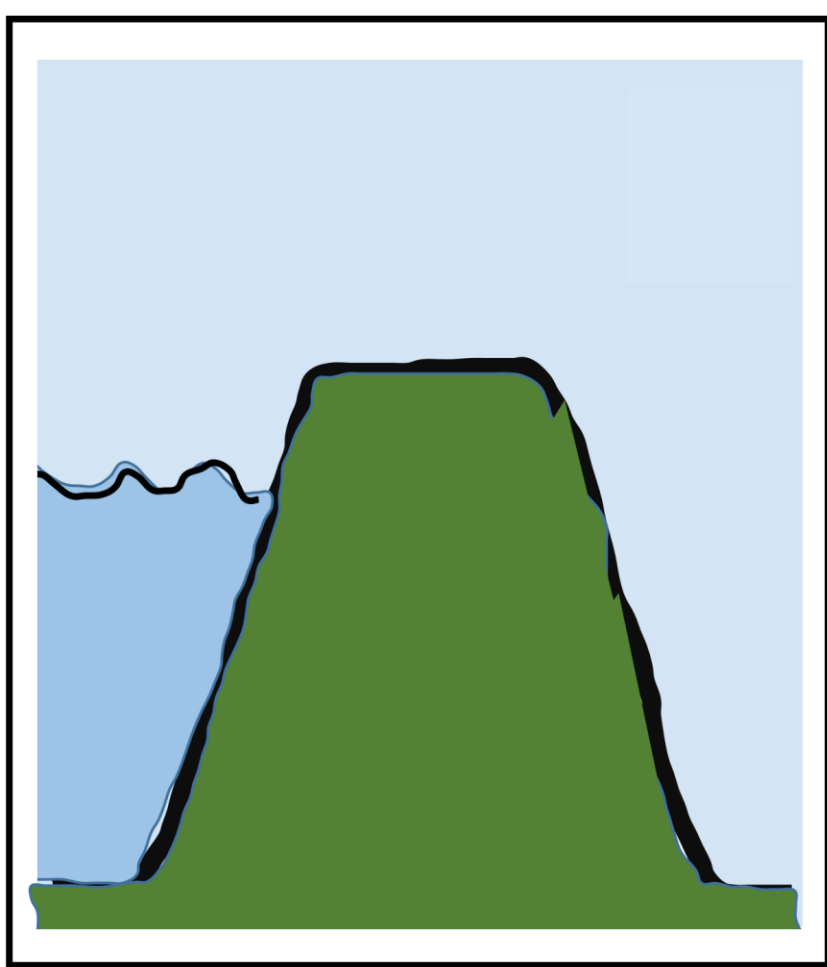
100  $\mu$ V  
200 ms

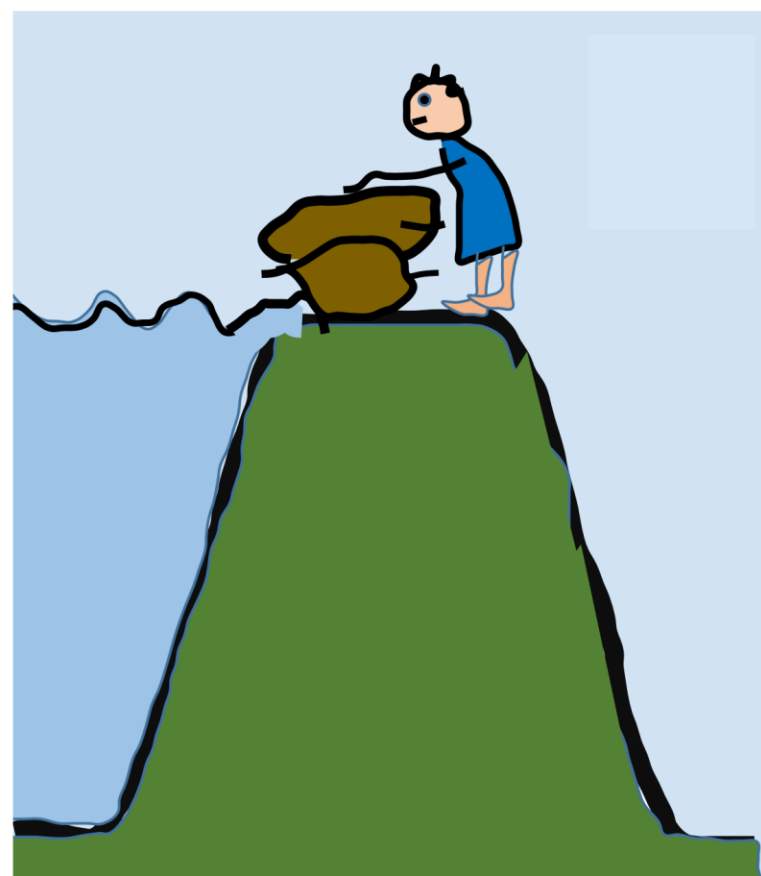
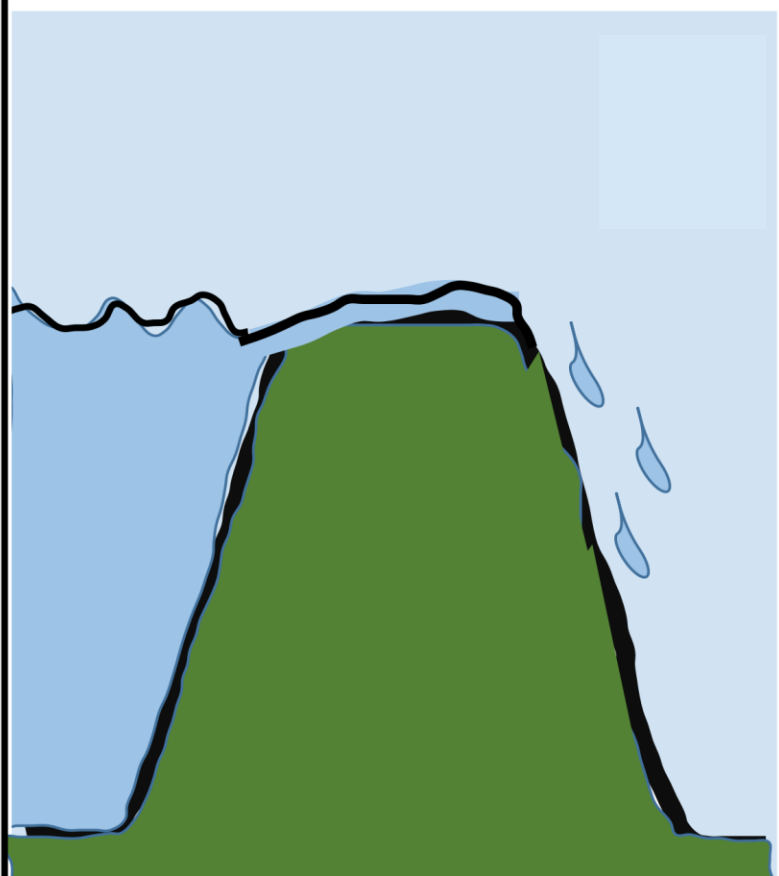
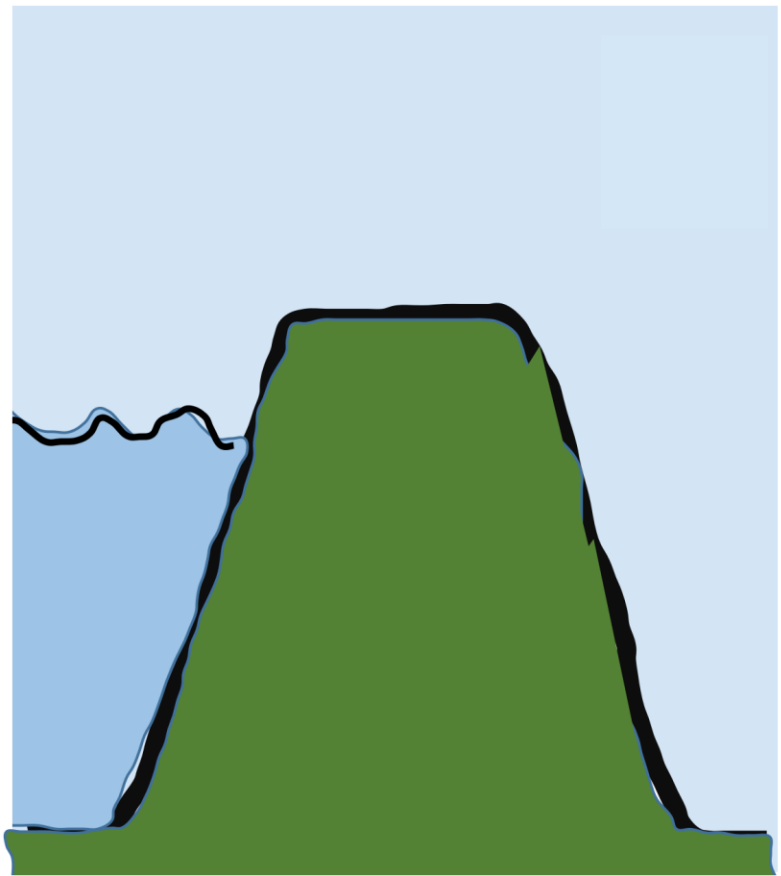




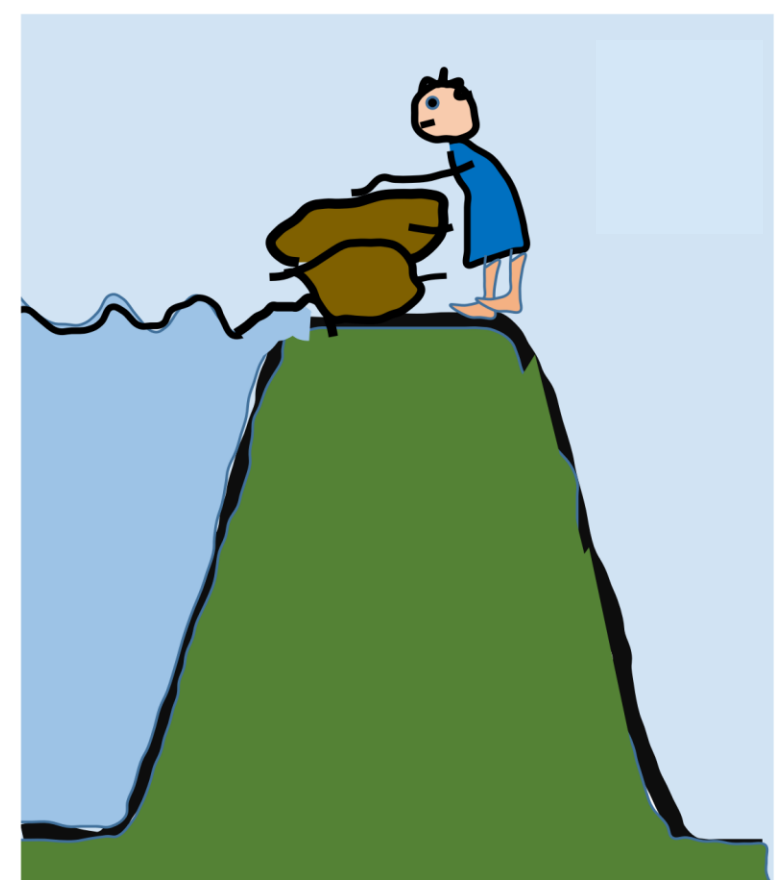
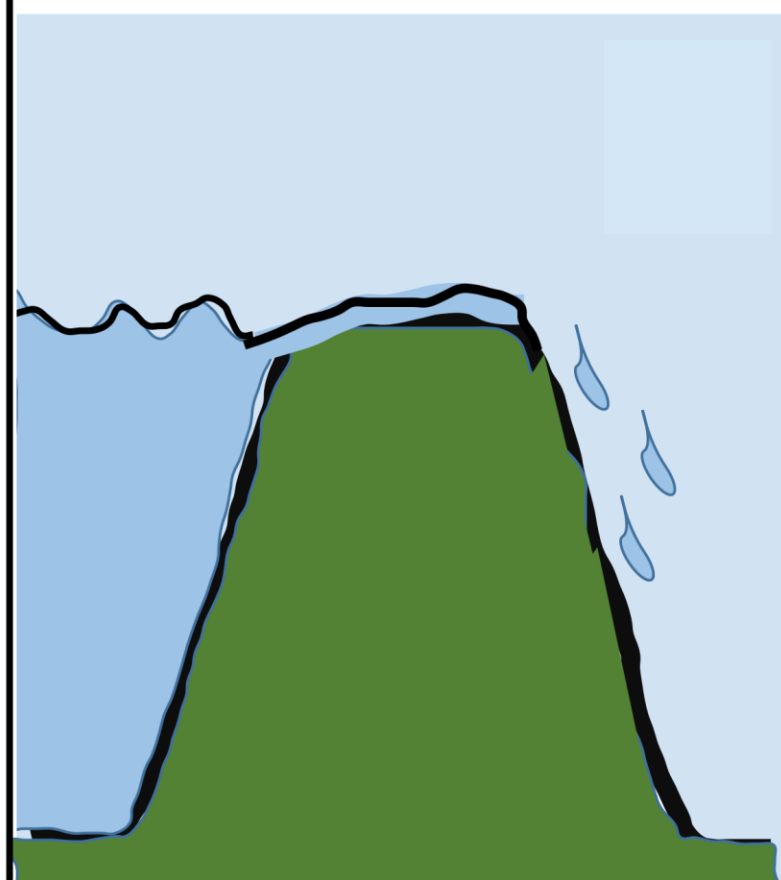
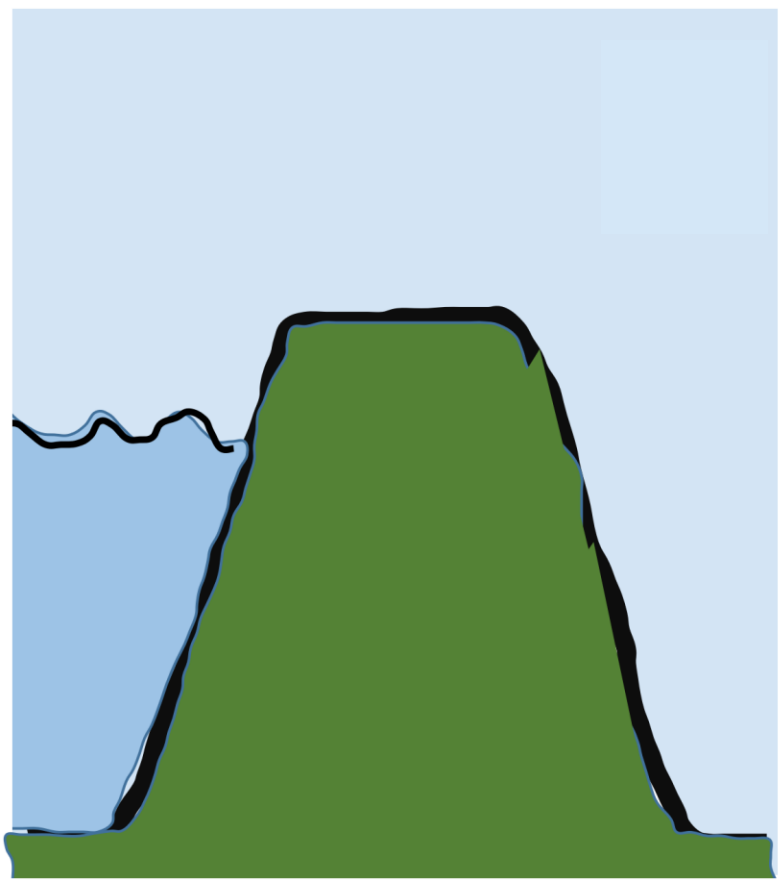


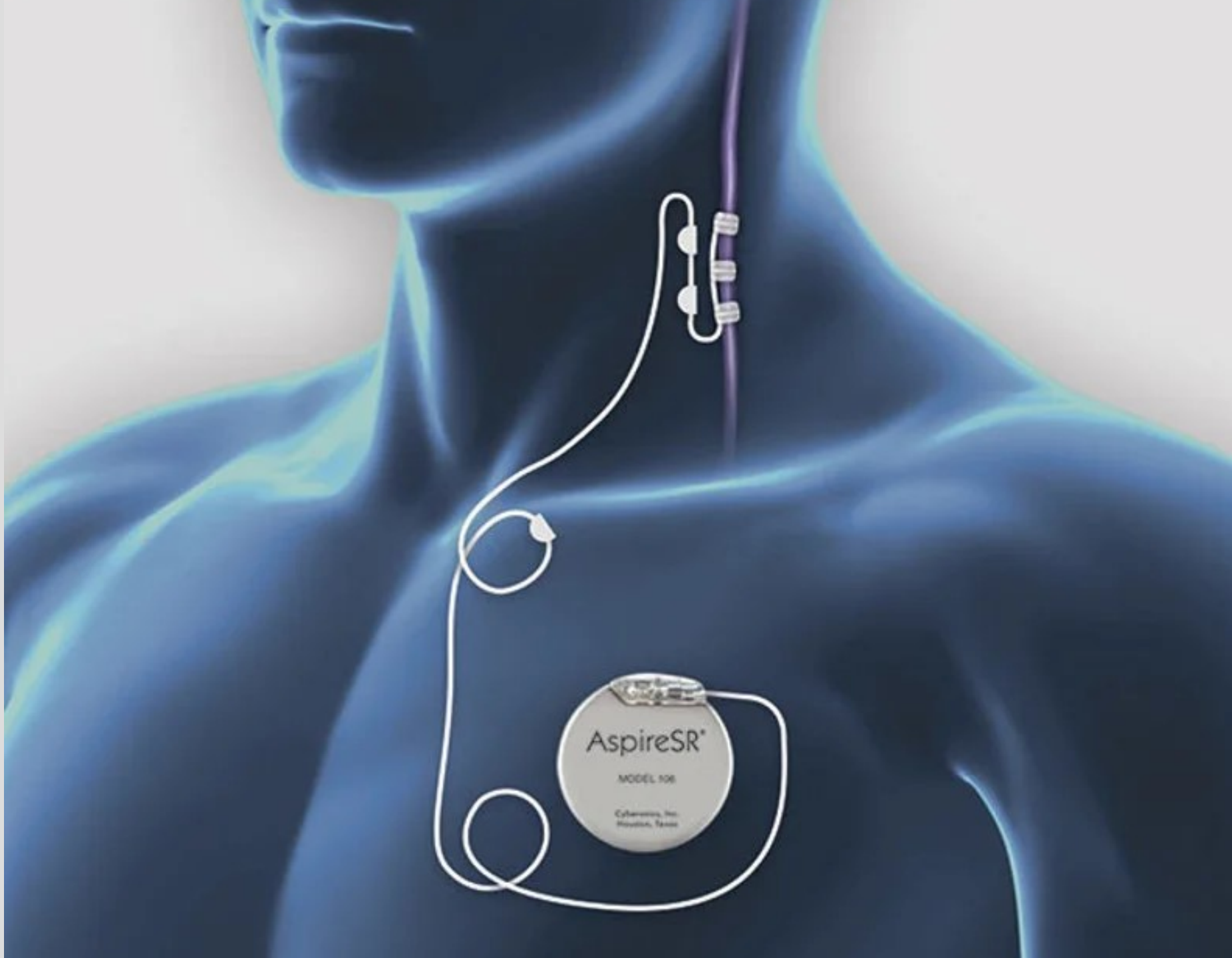










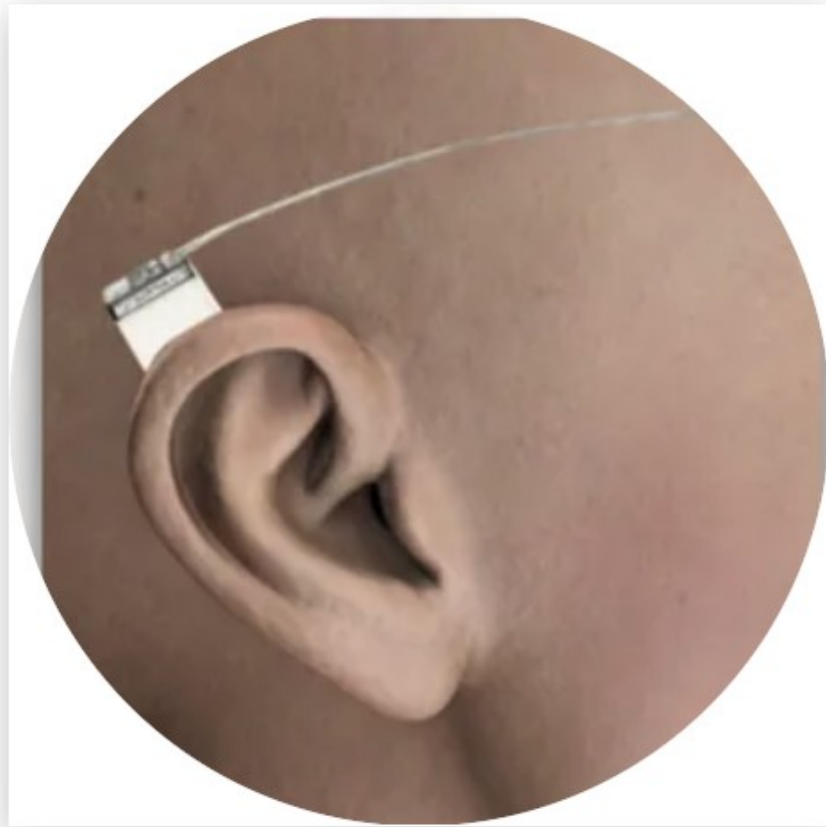


AspireSR®

MODEL 106

Cyberonics, Inc.  
Houston, Texas

# Predyct









UNIVERSITY  
OF TWENTE.

