

A person in a white lab coat is shown from the back, interacting with a digital interface. The interface consists of a grid of hexagonal icons, each containing a different symbol: a DNA helix, an atom, a heart with a pulse line, a person silhouette, a microscope, and a globe. The person's hands are raised, touching the icons. The background is a dark blue gradient with a grid of hexagons.

THE
TECHMED
EVENT | SHAPING A
HEALTHY
FUTURE

The circle of life!

A sustainable hospital is it possible?

Iris Hobo, MDM

Our new building!



Welcome!



Smart demolition



Effective energy plan...



Warm coat facade...



Natural heat sources...



Shared workspaces...



Shared sleeping areas?



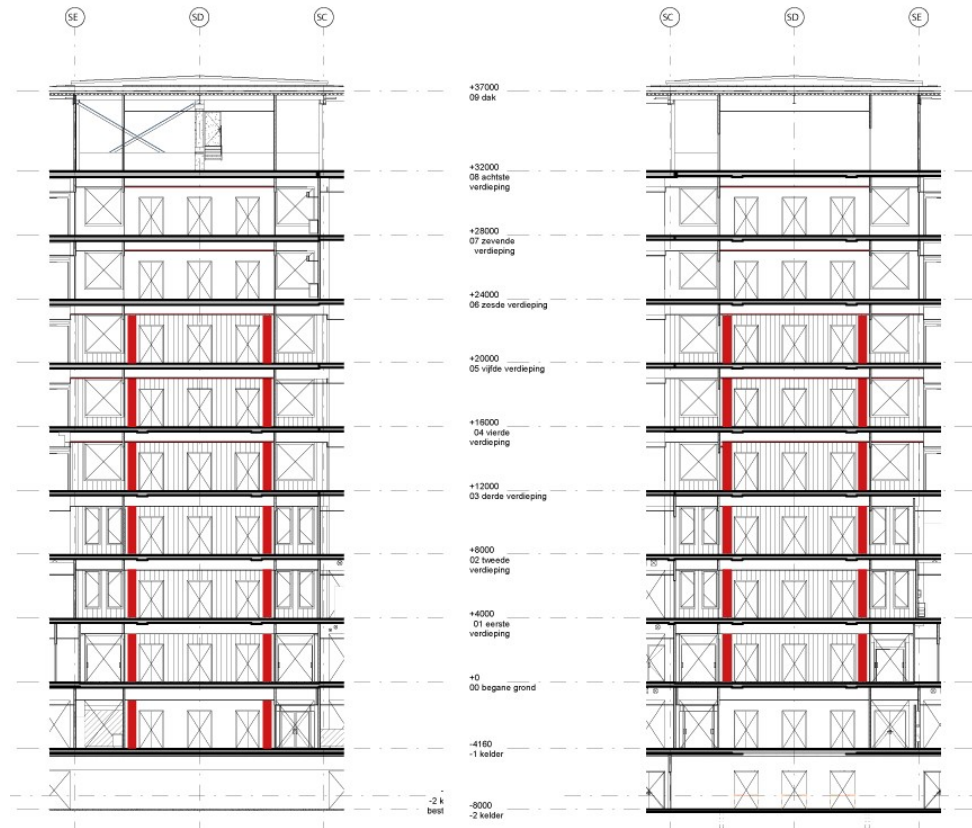
Testing with patients



Smart Hospital



Circular Art...



Artist: Niel Steenbergen

Circular Art...



Reuse of construction cloths...



Reuse of construction cloths...



Two wooden stools with speckled seats are positioned against a dark blue wall. The stools have a light-colored wood frame and a seat with a white base and small dark specks. The floor is made of light-colored wood. The text 'Reuse of doctor's coats' is overlaid on the bottom left of the image.

Reuse of doctor's coats



Reuse of doctor's coats



Reuse of doctor's coats



Partners and suppliers

- Construction management: Project-agency construction management Radboudumc
- Architects: EGM architects, Dordrecht
- Interior designer: Suzanne Holz Studio, Laren
- Landscape architect: Copijn landscape architects, Utrecht
- Constructor: Aronsohn, Rotterdam
- Advisors
- *Installations*: Deerns, Nijmegen
- *Acoustics/building physics*: Peutz, Mook
- *Sustainability*: DGMR, Arnhem
- *Housing*: Ptg Advies, Amersfoort
- Main contractor: Consortium FourCare (Trebbe, Van Wijnen, ENGIE Services, Unica)
- Imagery and visuals: EGM architects, Suzanne Holtz Studio, Photography studio Eye4You, Radboudumc