

ORGAN-ON-A-CHIP: BETTER DESIGNS, BETTER HEALTH

01.11.2023 | TECHMED CENTRE



ORGAN-
ON-CHIP
CENTRE
TWENTE



THE
TECHMED
EVENT

SHAPING A
HEALTHY
FUTURE

**UNIVERSITY
OF TWENTE.**

Organ-on-Chip
Centre Twente

CENTRE OF EXPERTISE

**MESA+
INSTITUTE**

**TECHMED
CENTRE**



**UNIVERSITY
OF TWENTE.**

Organ-on-Chip
Centre Twente

CORE VALUES:

INNOVATION, EXPERTISE AND CONNECTION

MISSION:

Collectively develop the next generation of organs-on-chips for the benefit of human health and medicine.

UNIVERSITY OF TWENTE.

MESA+ INSTITUTE

TECHMED CENTRE

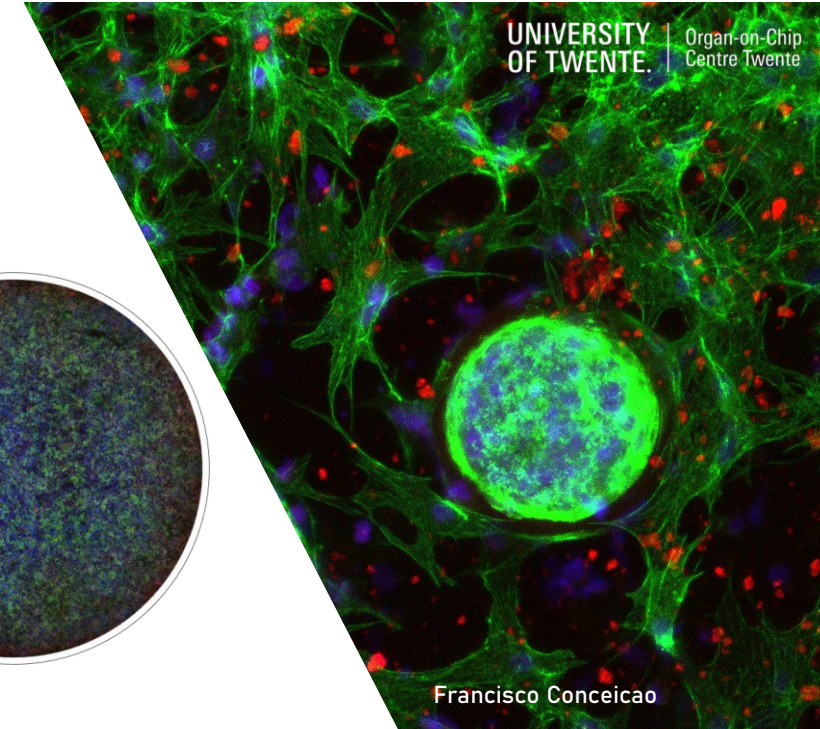
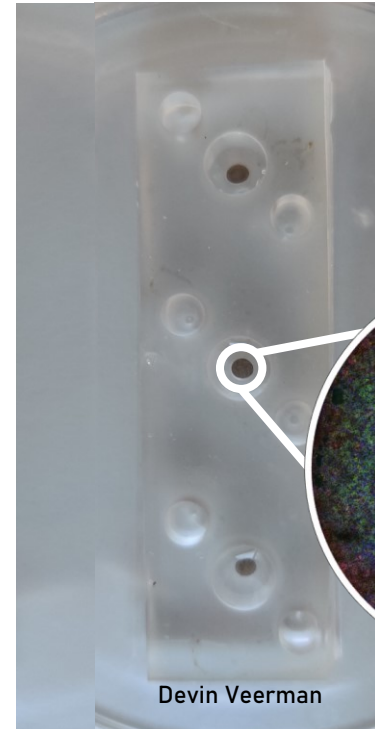
REALISING THE POTENTIAL OF ORGANS-ON-CHIPS

- **What are Organs-on-Chips (OoC)?**

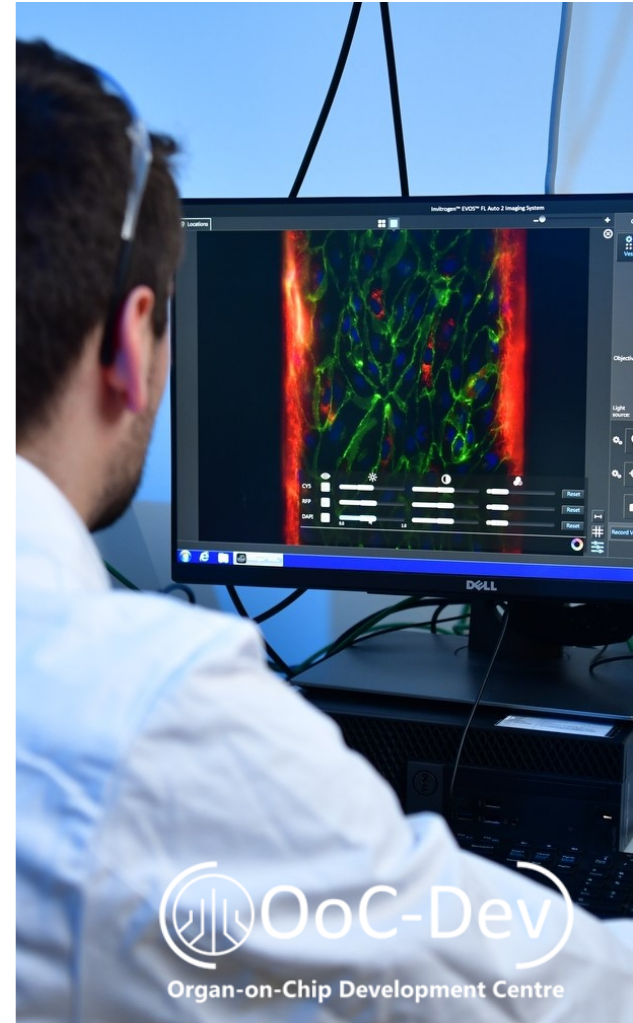
OoC are small transparent devices with living cells and tissues that mimic the functions of your organs.

- **What can OoC be used for?**

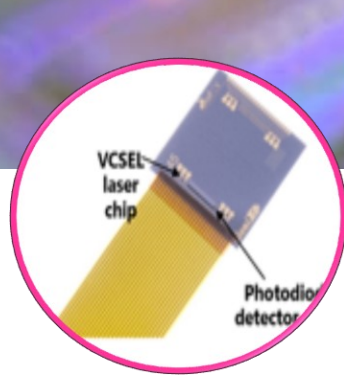
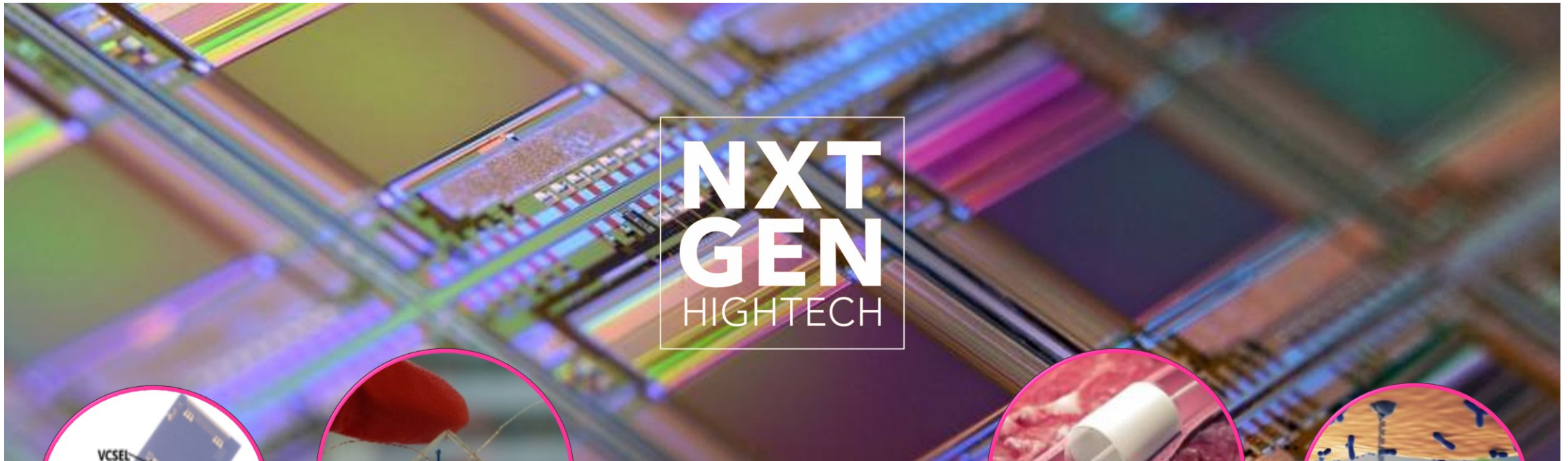
They can be used to study how a tissue functions in health and disease, and how it responds to drugs, without harming animals or humans.



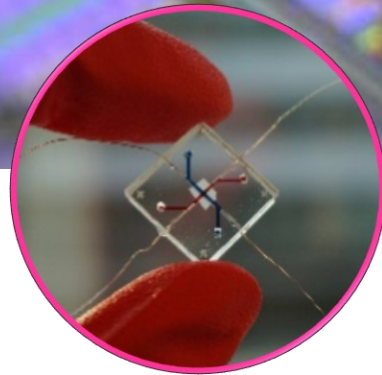
Highlight Organ-on-Chip Development Centre



Highlight NXTGEN HIGHTECH



Lab-on-Chip

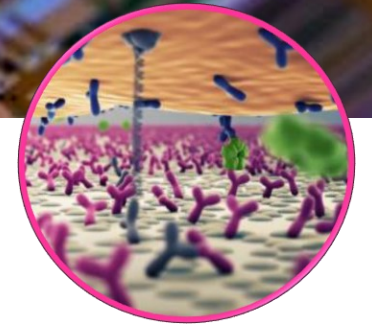


Organ-on-Chip

The next-generation high tech equipment for future generations

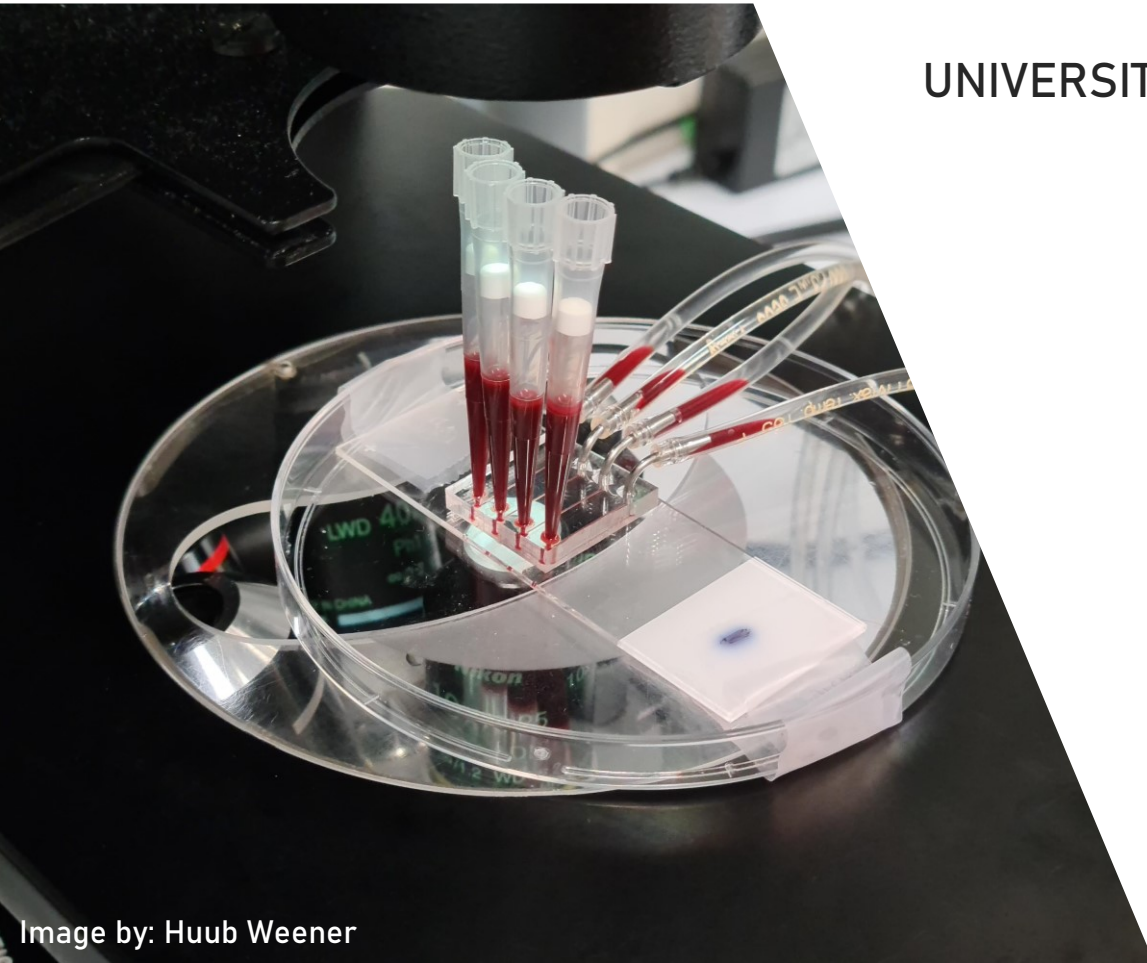


Artificial organs



Cell Production Technologies

Highlight NUMBER ONE INSTITUTE IN EUROPE FOR ORGAN-ON-CHIP RESEARCH



UNIVERSITY OF TWENTE CREATES THE MOST SCIENTIFIC OUTPUT

We are the ultimate 'hub' for people of all disciplines, experience and sectors to work together on ensuring that Twente remains **the 'place to be' for organs-on-chip** for the coming years.

Demonstrated in a systematic analysis published in Front Bioend Biotech by researchers from [ETH Zürich](#).

Contact

ooct@utwente.nl

utwente.nl/ooct

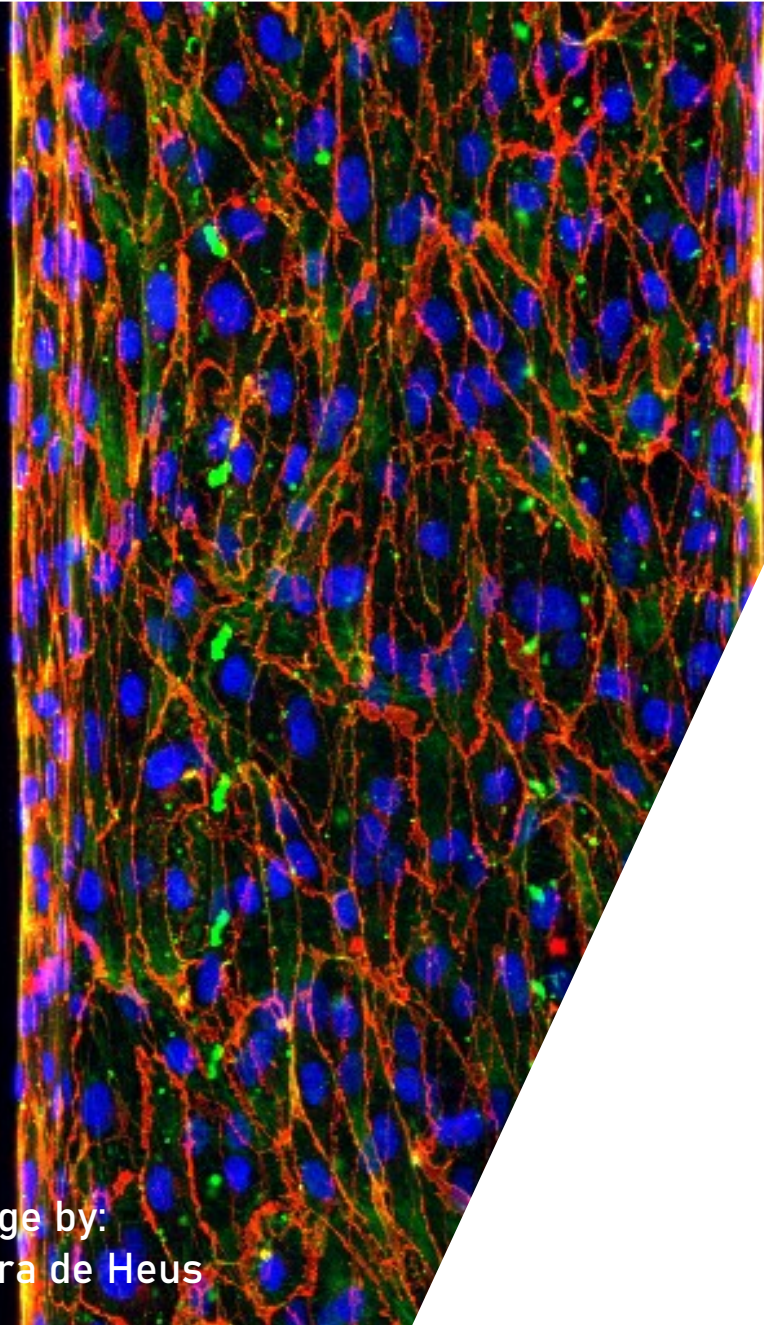


Image by:
Laura de Heus



Andries
van der Meer



Liliana
Moreira Teixeira



Sanne
de Wit

Scientific Leads

Programme
Manager

THE PROGRAMME

13.15 - 13.25

Welcome & Introduction

Dr. Liliana Moreira Teixeira, University of Twente

13.25 - 13.45

Joint on chip technology: a new era in studying rheumatic disorders

Prof.dr. Marcel Karperien

Laurens Spoelstra, University of Twente

13.45 - 14.05

Clinical biomedical research as alternative for animal testing, sponsored by Longfonds

Prof.dr. Andries van der Meer, University of Twente

Anne van der Does PhD, Leiden University Medical Centre

14.05 - 14.25

On generating spin-off activities in the Organ-on-Chip field

Dr. Carla Cofiño Fabres, University of Twente

Dr. Marcelo Ribeiro, River Biomedics

14.25 - 14.30

Closing words

Dr. Liliana Moreira Teixeira, University of Twente

**UNIVERSITY
OF TWENTE.**

**Organ-on-Chip
Centre Twente**

UNIVERSITY OF TWENTE.

MESA+ INSTITUTE

TECHMED CENTRE