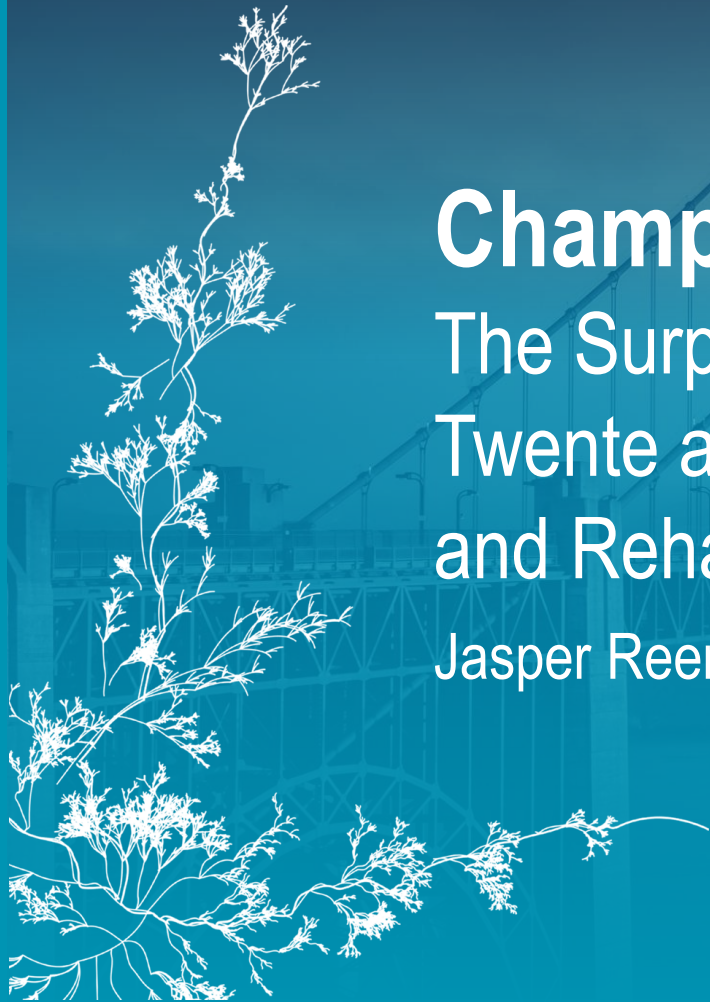


Champions of Health:

The Surplus of a Regional Innovation Platform between FC Twente and the knowledge institutes on Data in (Top)Sports and Rehabilitation Exercise and Health

Jasper Reenalda, University of Twente



CHAMPIONS OF HEALTH: THE SURPLUS OF A REGIONAL INNOVATION PLATFORM BETWEEN FC TWENTE AND THE KNOWLEDGE INSTITUTES ON DATA IN (TOP)SPORTS AND REHABILITATION EXERCISE AND HEALTH

Jasper Reenalda University of Twente



Sports Research @ University of Twente

- Collaboration with Saxion, ROC and FC Twente
- Sport Data Centre
- SportInnovator center
 - Sport Tech Center Twente
- Courses on the topic of sports in the different curricula
 - Sensors for Sports (Create)
 - Sports Interaction Technology (Itech)
 - Technology for the Assessment of Performance in Sports
 - Minor Sports Technology (under development)
- Many collaborative projects and many student projects



Regional collaboration via student projects

- TalentNED
- OCON
- Demcon Johan Sports
- Pro F Fysiotherapy



CHAMPIONS OF HEALTH: THE SURPLUS OF A REGIONAL INNOVATION PLATFORM BETWEEN FC TWENTE AND THE KNOWLEDGE INSTITUTES ON DATA IN (TOP)SPORTS AND REHABILITATION EXERCISE AND HEALTH

- **Professional football and the ecosystem**
 - Ivar Hageman, FC Twente & Saxion University of Applied Sciences
- **The implementation of regional innovations during the rehabilitation of a soccer player**
 - Wouter Welling, Pro-F Professionele Fysiotherapie
- **Bridging Education and Industry: Preparing the Workforce of Tomorrow**
 - Ferran Plaggenborg, ROC van Twente
- **Innovating Sports Performance: The Future of Technology in Athletics**
 - Tjerk Bijlsma, Demcon JOHAN Sports



TRENDS IN BEWEGINGSANALYSE

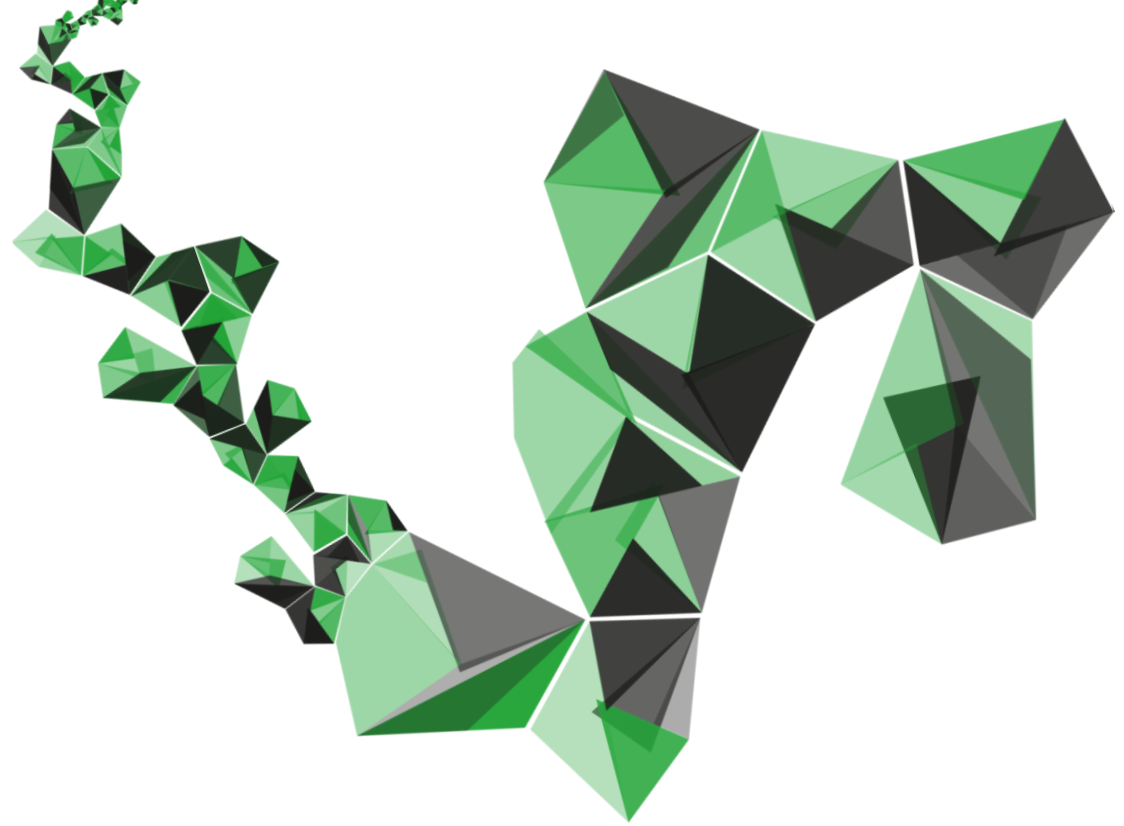
VOOR PRESTATIE OPTIMALISATIE,
BLESSURE PREVENTIE EN REVALIDATIE

Jasper Reenalda PhD

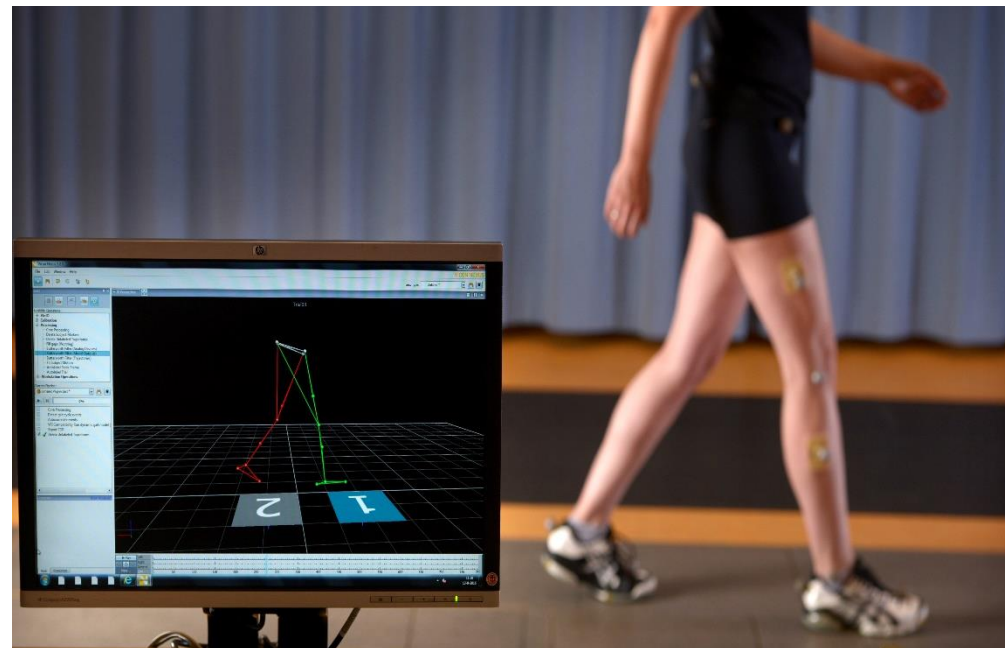
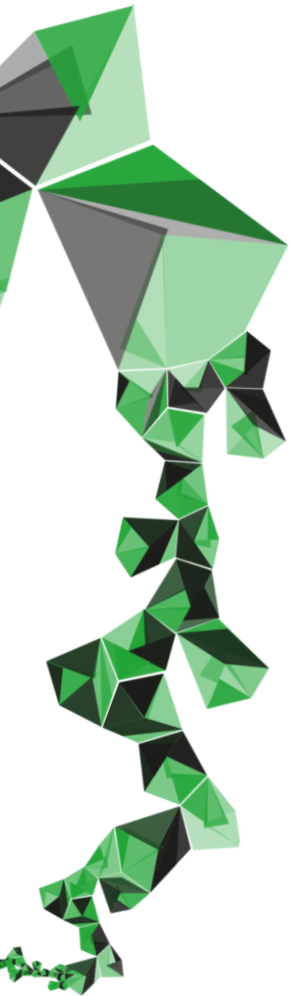
Electrical Engineering mathematics and computer science

Biomedical signals and systems

06-11-2024

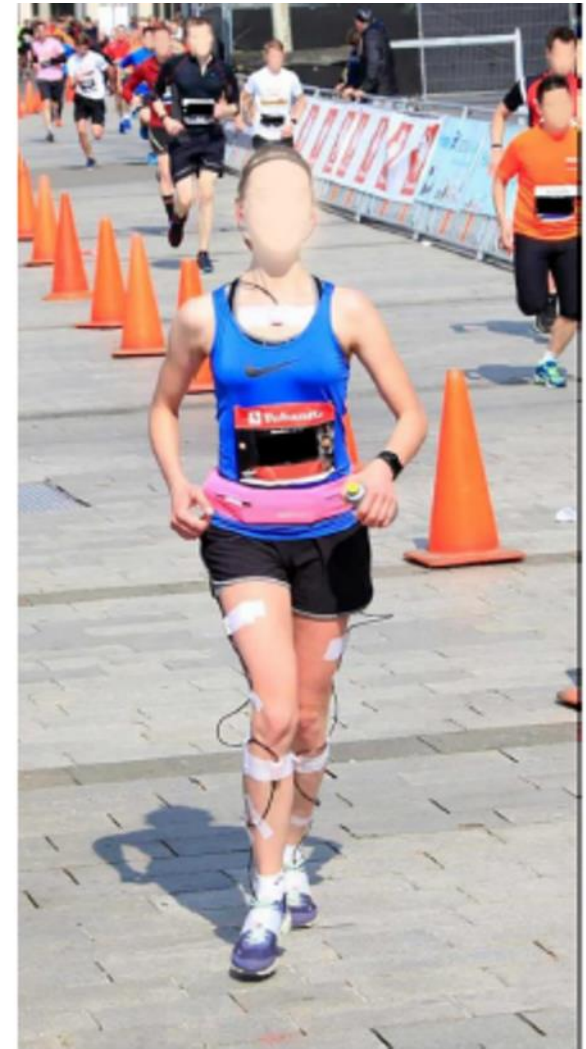
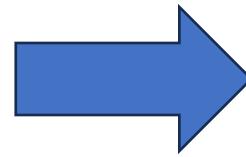
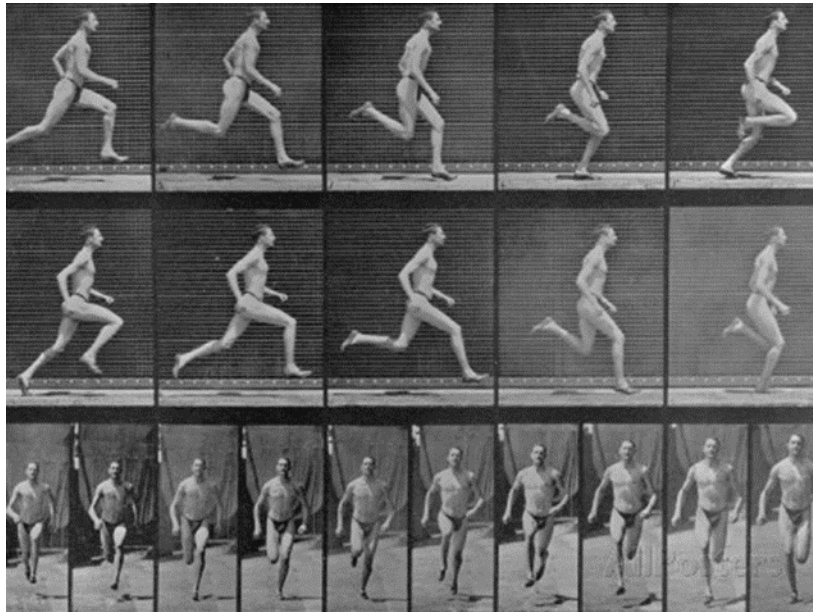
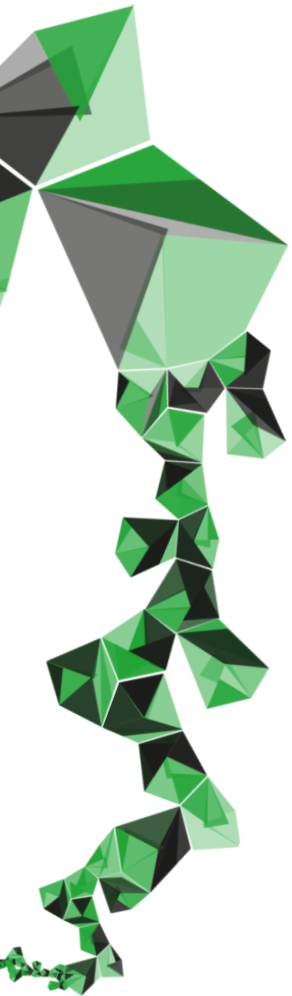








WE HEBBEN AL EEN HELE WEG AFGELEGD...



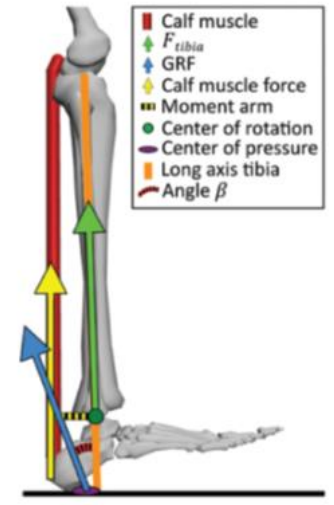
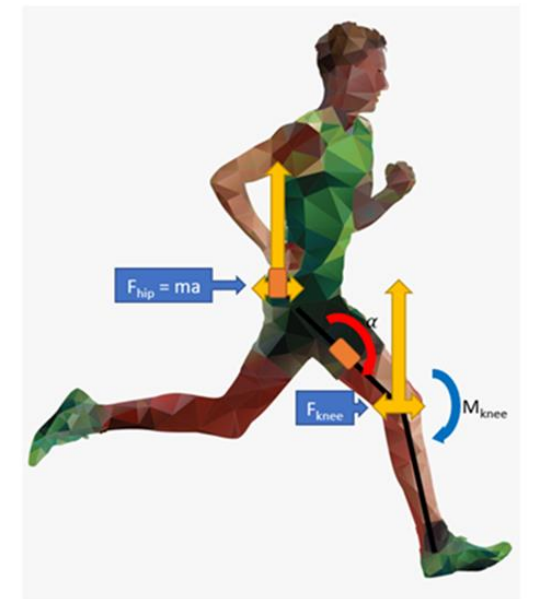
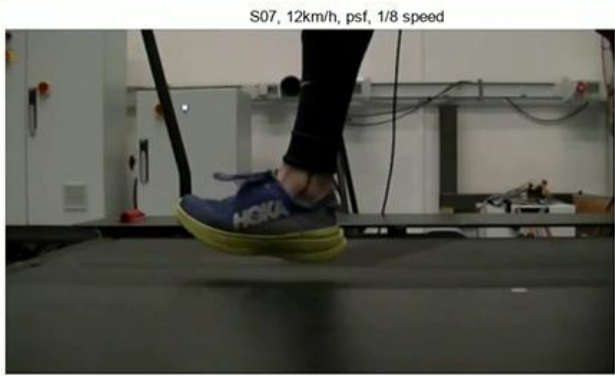
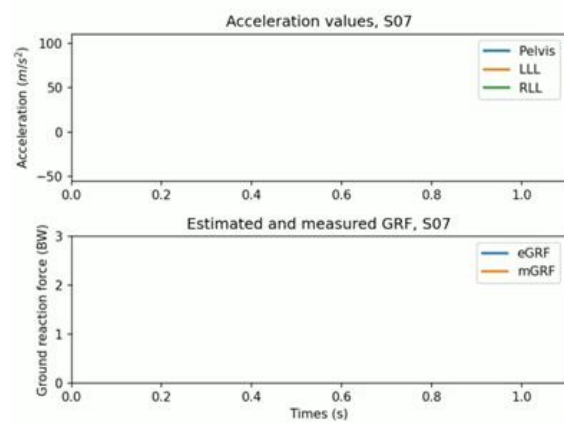


Fig. 2. Visualization of the 2D knee-in model to estimate tibial compression forces. Calf muscle =



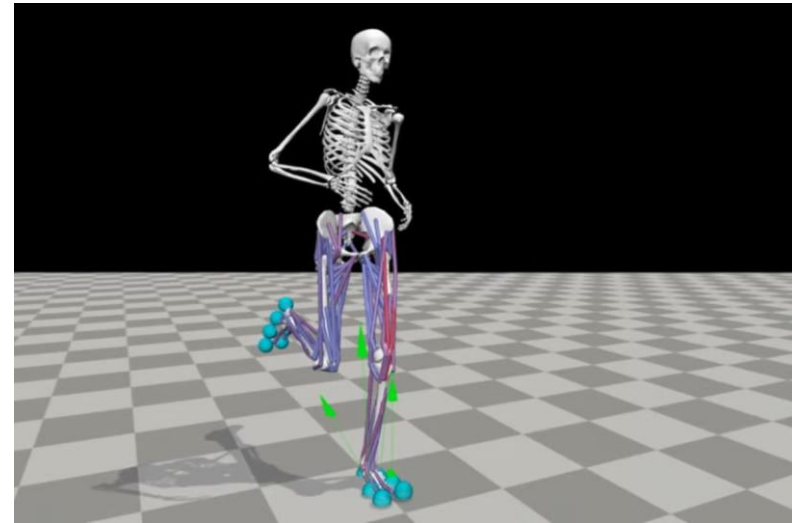
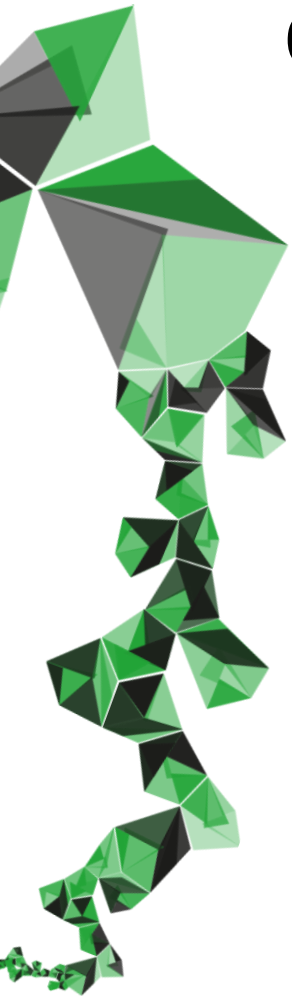
HOE MAKEN WE HET EENVOUDIGER?

- Eenvoudige meting van de relevante kinematische en kinetische parameters
- Minimale sensor setup



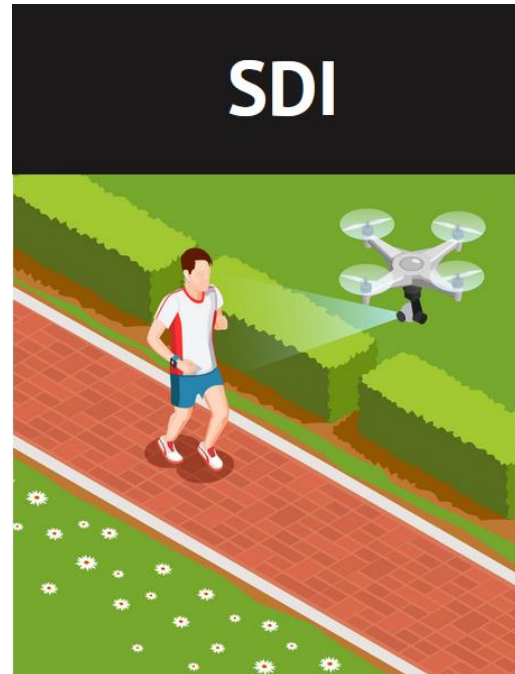
- +

OPENGL MARKED LESS

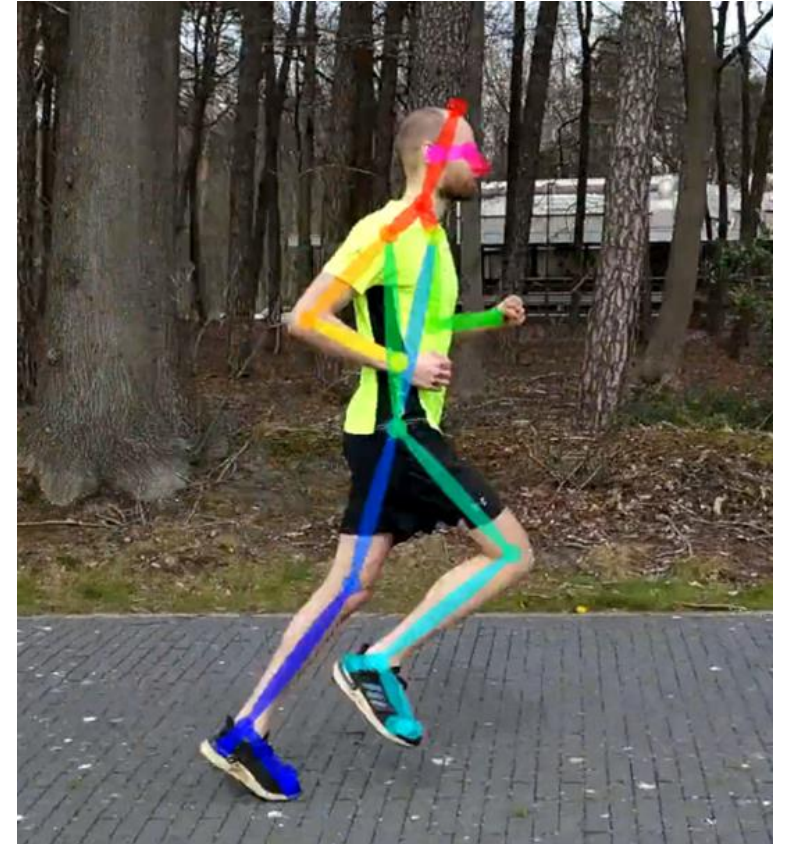


Futuristisch?

- Drone opnames
- Open Pose software
- Real time feedback?



**Towards Steering & Informative
Exergame Systems**
Aswin Balasubramaniam
On-Going Project

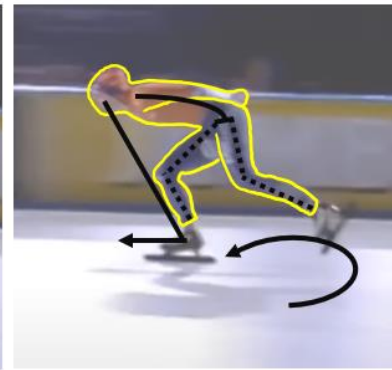
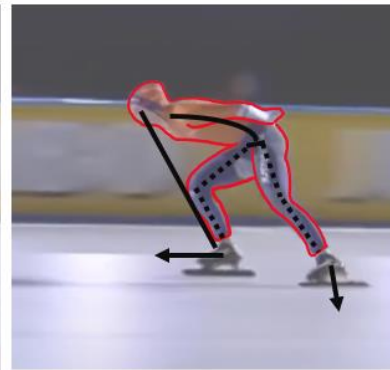
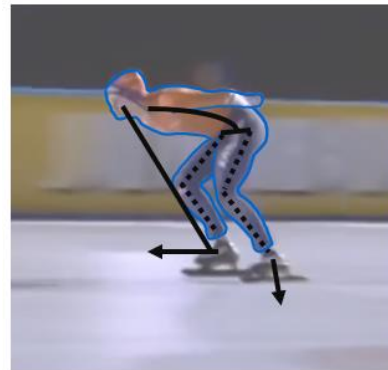
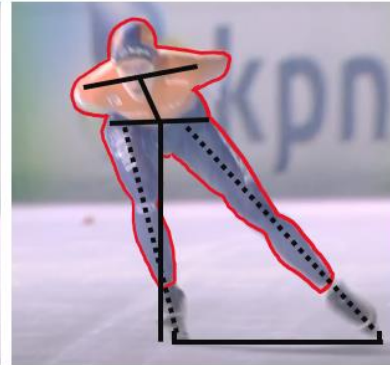
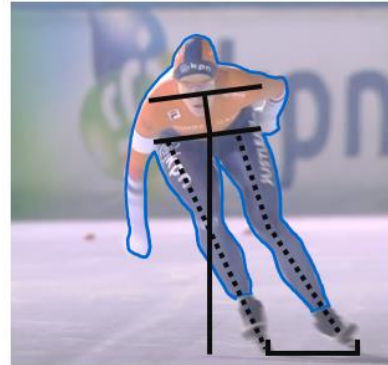




“REGIONALE INITIATIEVEN”



Lastige situaties?



Inzetsfase

Afzetfase

Glijfase



SKATE ASSIST I.S.M. TALENTED



RUN FORREST RUN!



Run! Run!

THE TECHMED EVENT

BRIDGING PAST AND FUTURE: FIVE YEARS
OF MEDTECH ADVANCEMENTS AND BEYOND

